

# Step by step installation of control card

## USER'S MANUAL (V1.0)

健昇科技股份有限公司

**JS AUTOMATION CORP.**

台北縣汐止市中興路 100 號 6 樓

6F, No. 100, Chungshin Rd.

Shitsu, Taipei, Taiwan, R.O.C.

TEL : 886-2-2647-6936

FAX : 886-2-2647-6940

<http://www.automation.com.tw>

E-mail : [control.cards@automation.com.tw](mailto:control.cards@automation.com.tw)



# Contents

<b>STEP BY STEP INSTALLATION OF CONTROL CARD .....</b>	<b>2</b>
A. Hardware installation.....	2
B. Where to find the files? .....	3
Download from website or CD web page.....	3
Directly access from CD archives.....	6
C. Software installation.....	7
D. Verification of installation.....	10
E. Install demo program.....	13
F. Install the API .....	17
G. Install for Labview .....	22
H. Install for Linux .....	23

## **Step by step installation of control card**

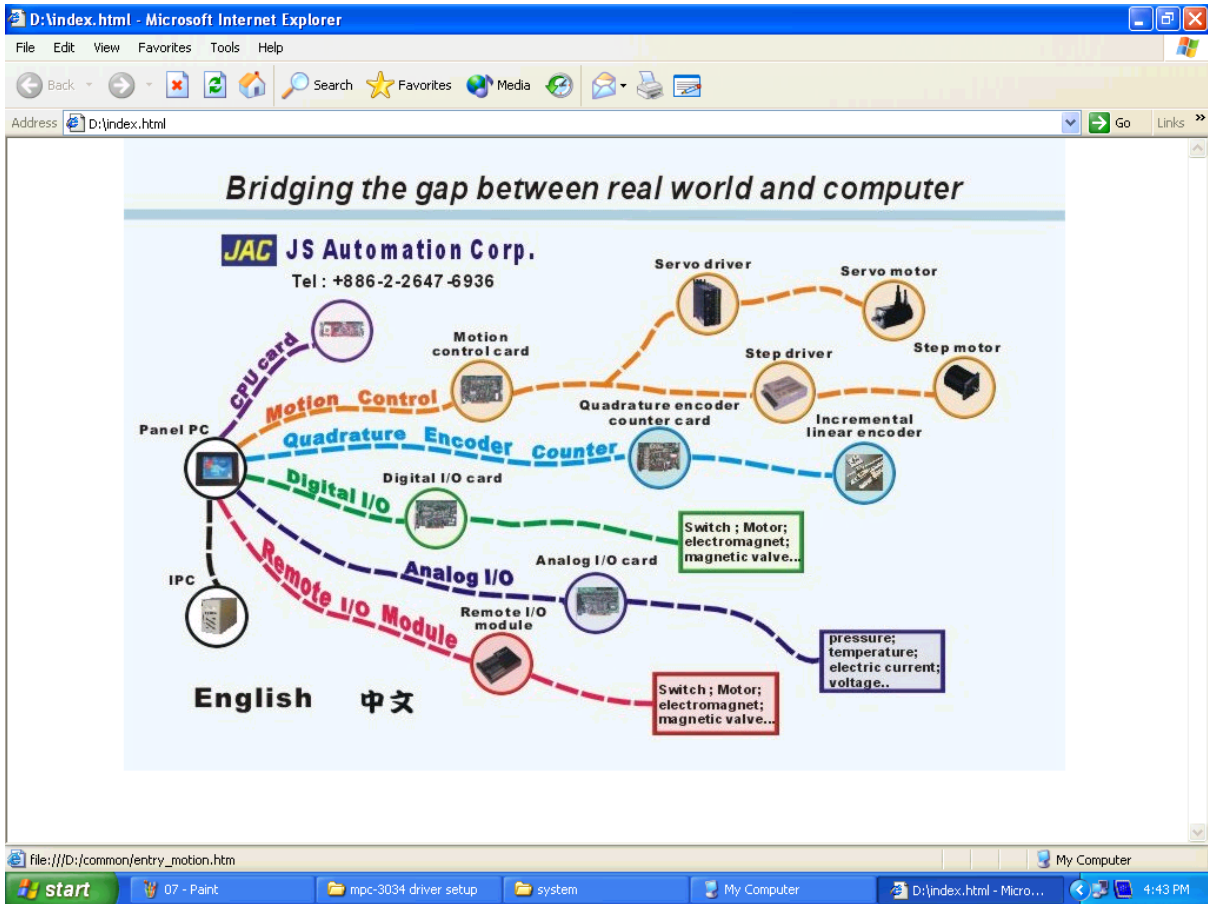
To install a control card is an easy job, if you follow the directions step by step.

### **A. Hardware installation**

1. Be sure your system is power off.
2. Be sure your external power supply for the wiring board is power off.
3. Plug your control card in slot, and make sure the golden fingers are put in right contacts.
4. Fasten the screw to fix the card.
5. Connect the cable between the card and wiring board.
6. Connect the external power supply for the wiring board.
7. Recheck everything is OK before system power on.
8. External power on.

## B. Where to find the files?

- **Download from website or CD web page**



(page-1)

### 1. From CD.

- Put the CD in the drive and auto play or click to open the 'index.html'.
  - Visit website 'http://www.automation.com.tw'
- Choose the control card you want to install, say 'Motion control card'

**JAC** A TUV certificated  
DIN ISO 9001:2000 company  
JS Automation Corp. [Home](#) [User's Club](#) [About Us](#) [Download](#) [Distributor/Agent](#) [Email](#)

*Bridging the gap between  
real world and computer*

**Products**

- [Digital I/O](#)
- [Analog I/O](#)
- [Motion Control](#)
- [Encoder Counter](#)
- [Remote Control Modules](#)
- [CPU card](#)
- [Automation Components](#)
- [OEM/ODM](#)
- [User's Club](#)

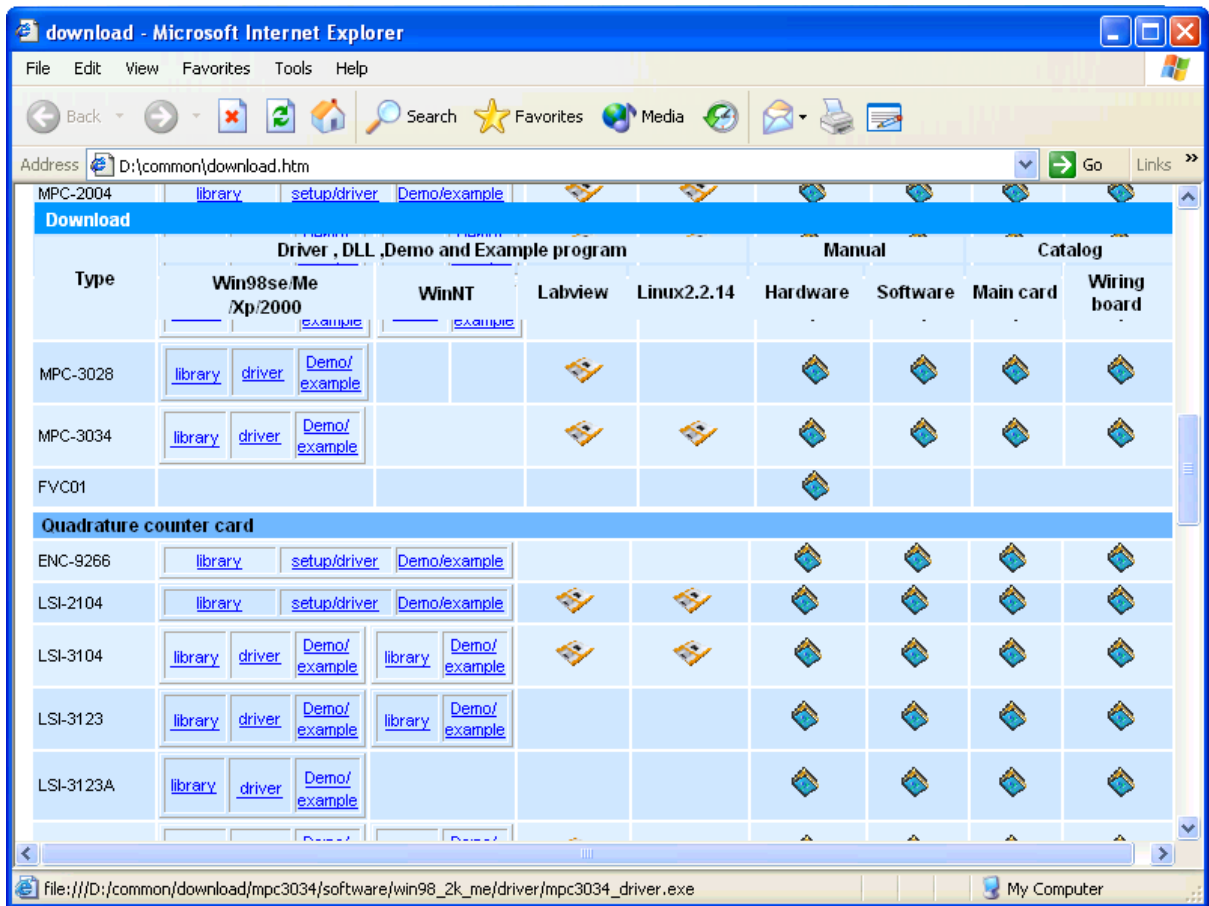
Use 800 x 600 display mode for best result.

**MPC comparison list**

Motion control card		
bus	type	description
ISA	PDC-9120	single axis positioning card (PTP, pulse type)
ISA	MPC-2004	4 axes motion control card (PTP, pulse type)
PCI	MPC-3004	4 axes motion control card (PTP, Linear, pulse type)
PCI	MPC-3024	4 axes motion control card (PTP, Linear, Circular, pulse type)
PCI	MPC-3026 <b>NEW</b>	8 axes motion control card (PTP, Linear, Circular, pulse type)
PCI	MPC-3034	4 axes motion control card (PTP, Linear, Circular, pulse type) with advanced functions
	FVC01	F TO V Module

(page-2)

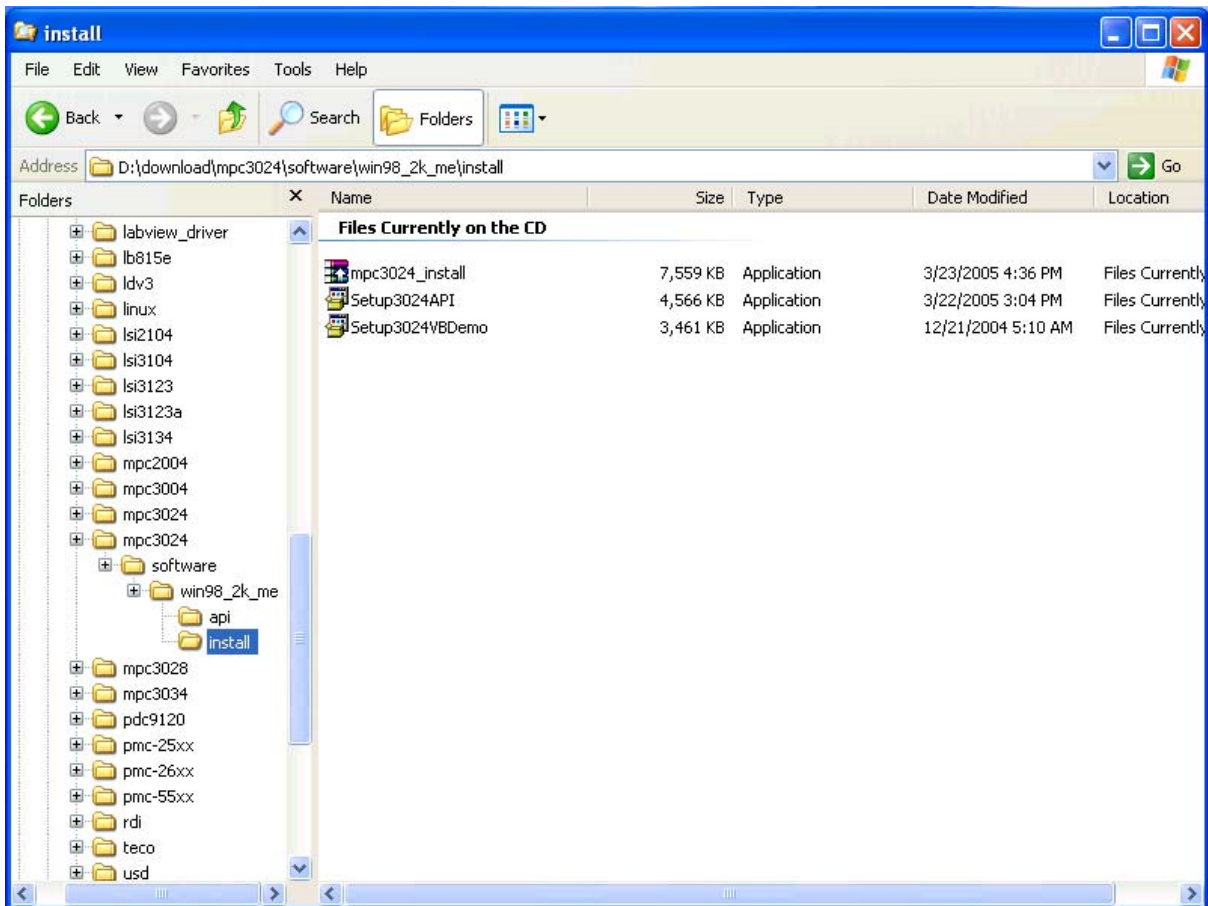
2. Click 'Download' at the header bar. All the documents of control cards are store under the directory.



(page-3)

- Find out the under installation card and click the corresponding file you need to download from the CD.

● **Directly access from CD archives**



(page-4)

1. Open the desired file directly from CD under the directory  
 '\download\control\_card\_name\software\os\_versio\install'.

Say, we will install motion control card MPC3034 under windows XP.  
 the directory will be '\download\mpc3024\software\win98\_2k\_xp\install'

2. There are 3 files under the directory.

**card\_name\_install.exe** the auto unzip file for the API and Demo file.

Setup**card\_number**API.exe the auto installation file of user application interface data and demo program source.

Setup**card\_number**VBDemo.exe the auto setup file for demostartion program (object code only).

3. For mpc3034 the files will be:

**mpc3034\_install.exe**

Setup**3034**API.exe

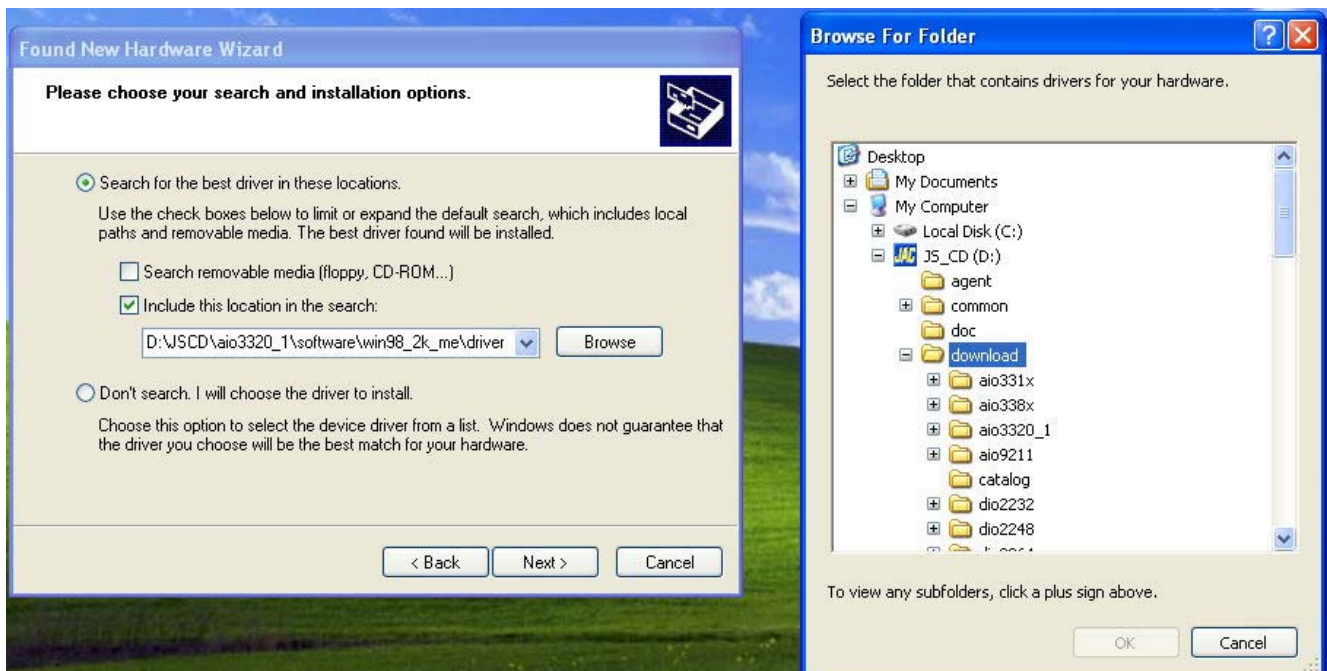
Setup**3034**VBDemo.exe

## C. Software installation



(page-5)

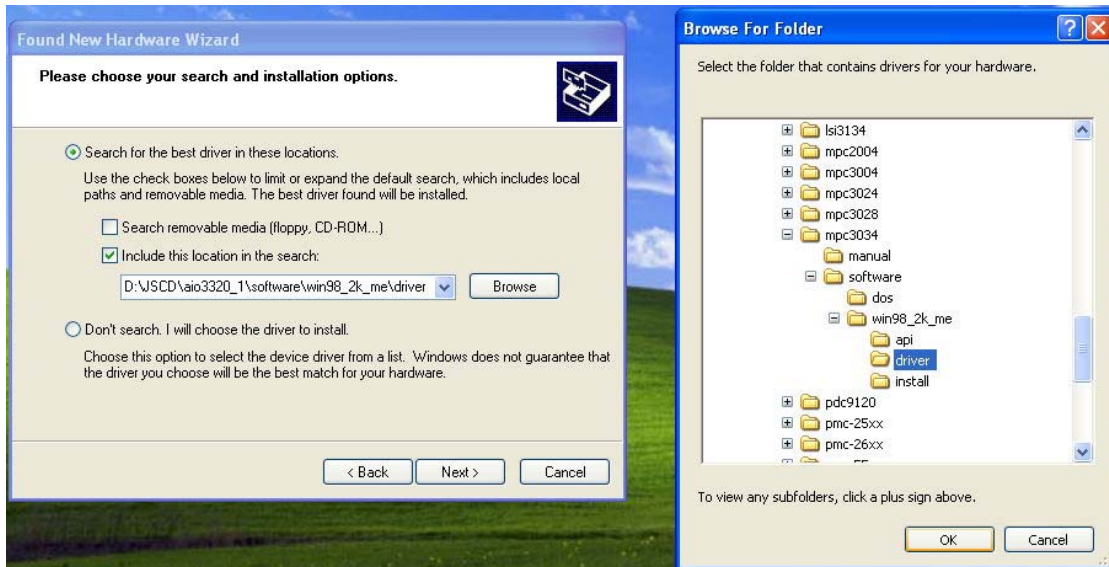
1. When the system power on after the control plug in. Window system finds the new added card and response.
2. Choose 'Install from a list or specific location'
3. Select install from specific location and click 'Next'.



(page-6)

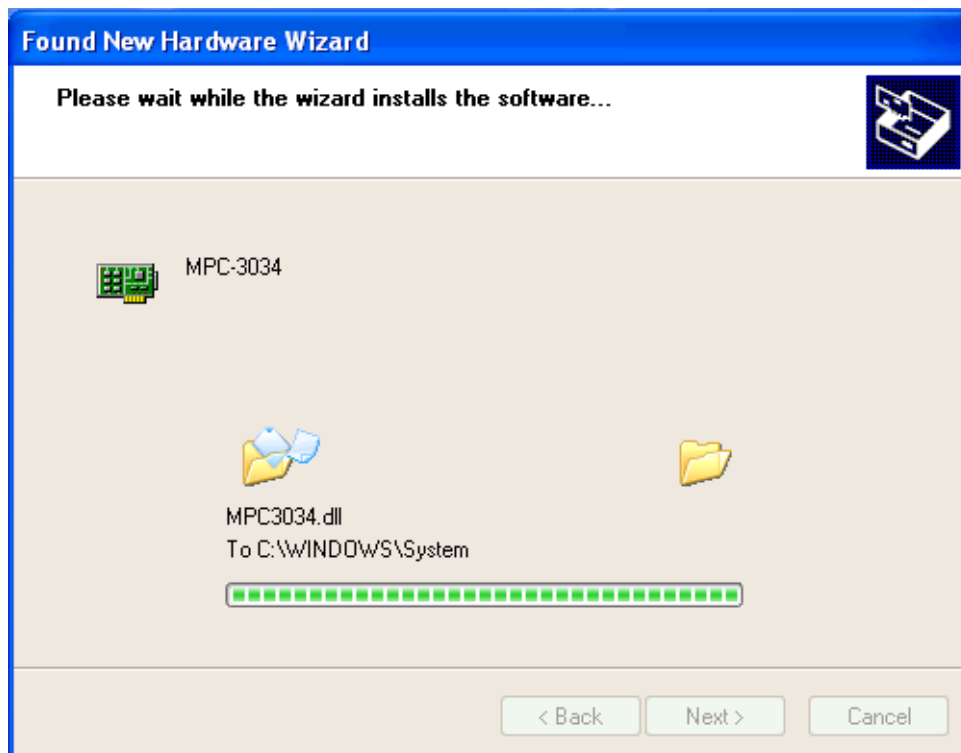


4. Select 'Search for the best driver in these location'
5. Choose 'include this location in the search'
6. Click 'Browse'
7. Choose file from '\\download\



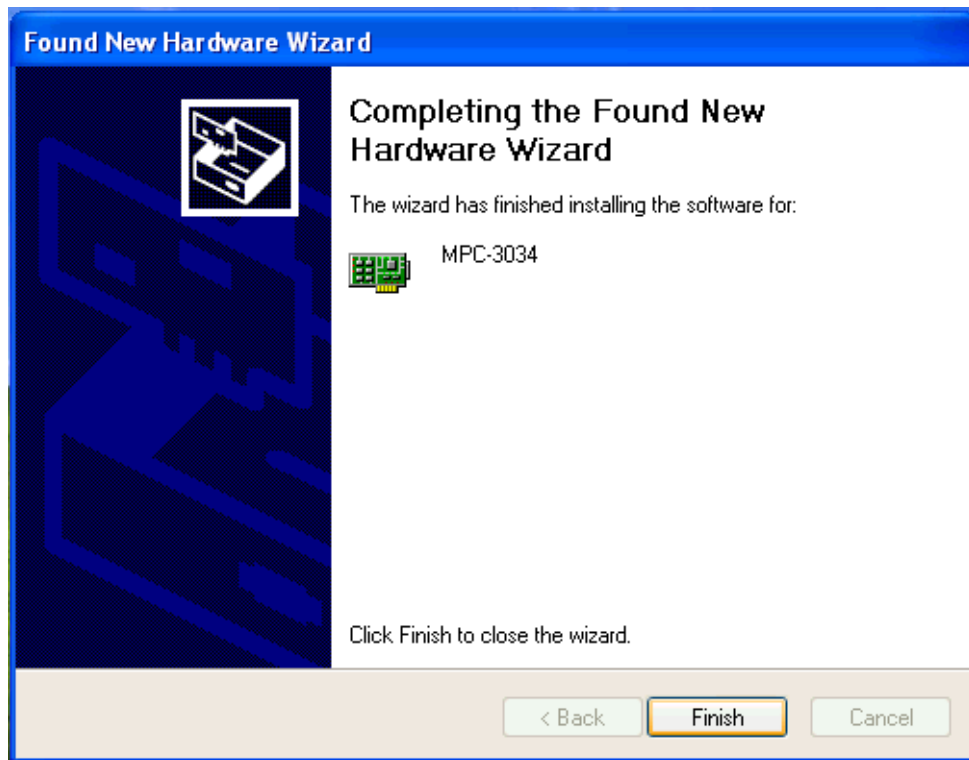
(page-7)

8. Choose file from '\\mpc3034\software\win98\_2k\_xp\driver' and click 'OK' to close 'Browse for Folder' screen. (mpc3034 as example)
9. Click 'Next'



(page-8)

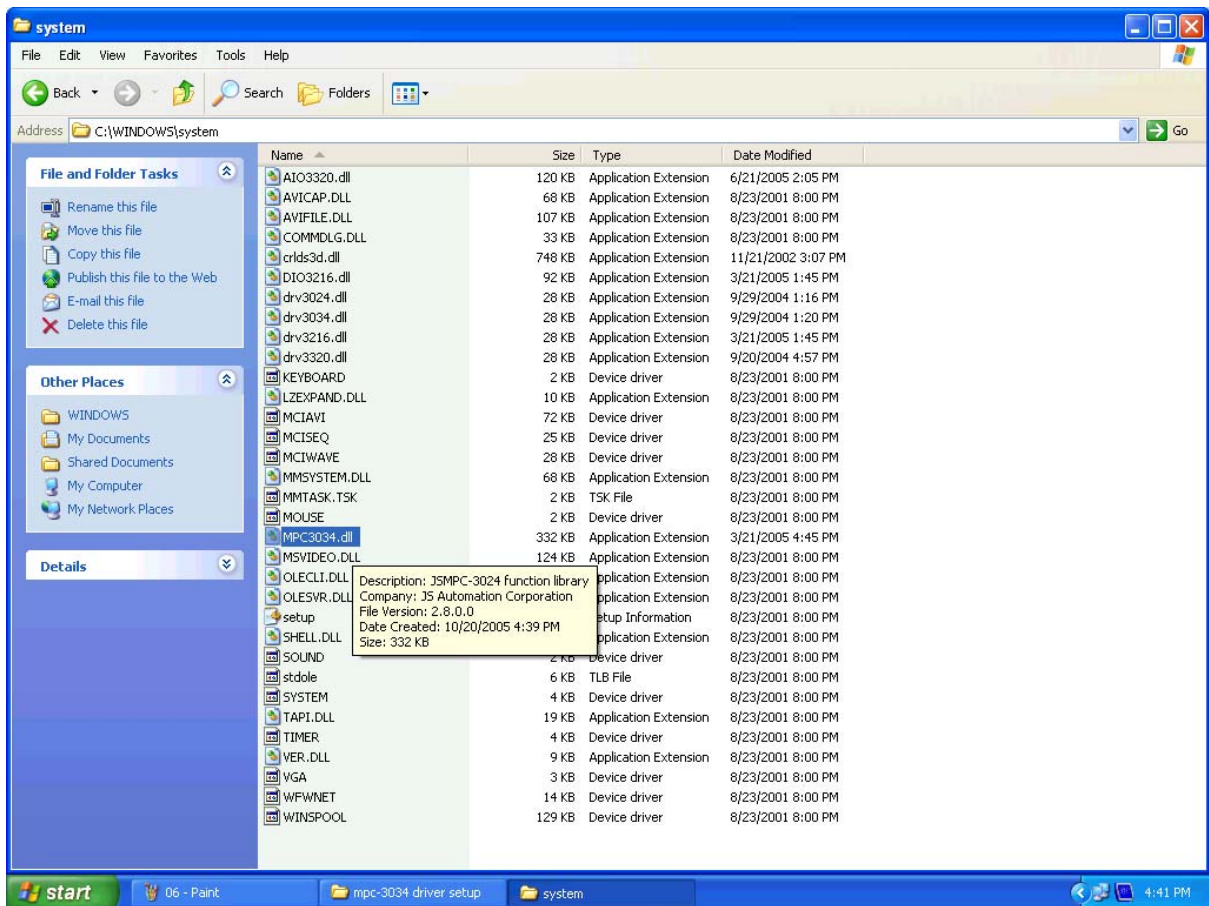
10. Wait for the system begins to install the driver.



(page-9)

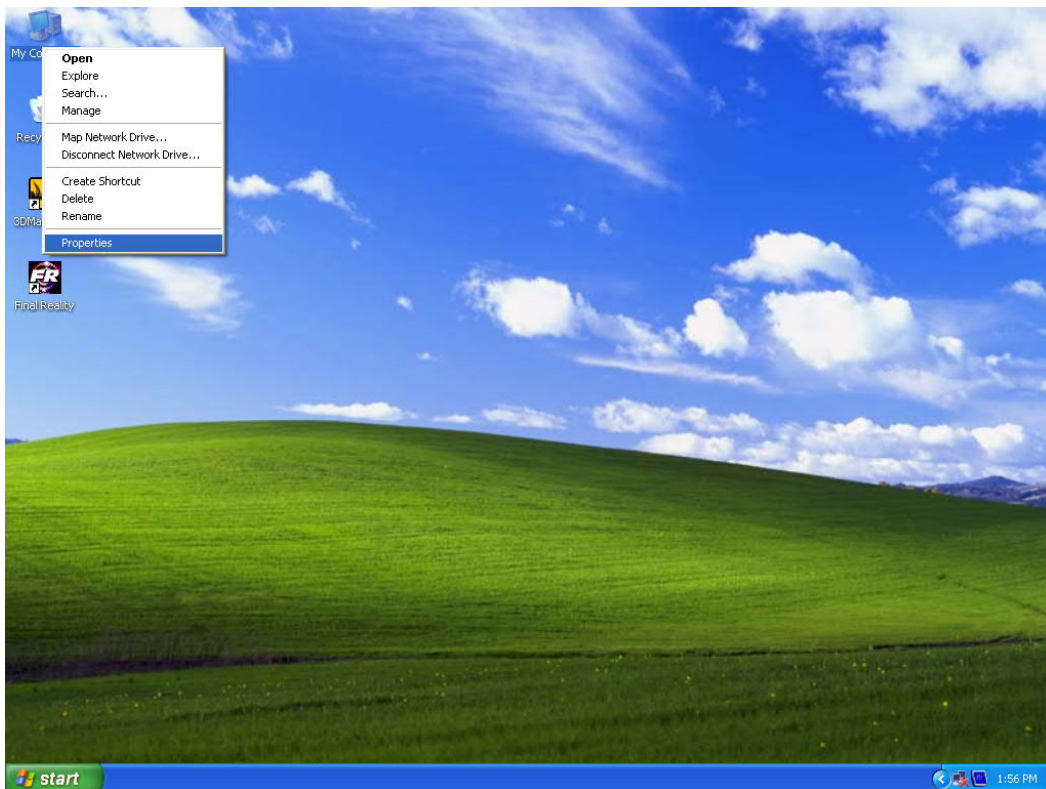
11. System completes the installation. Click 'Finish' to close the task.

## D. Verification of installation



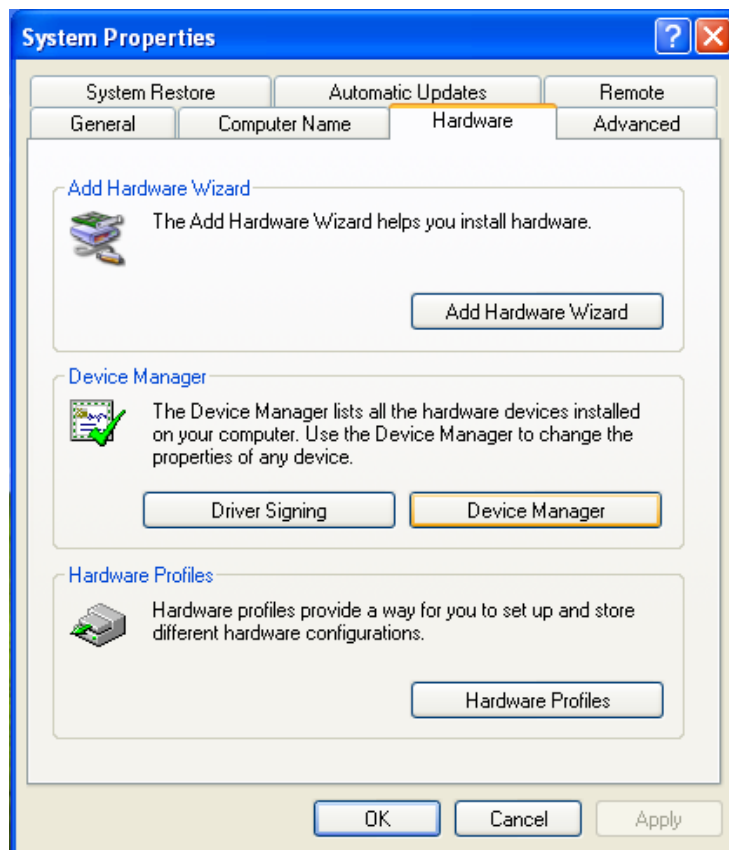
(page-10)

1. mpc3034 driver will add to \ windows\system\



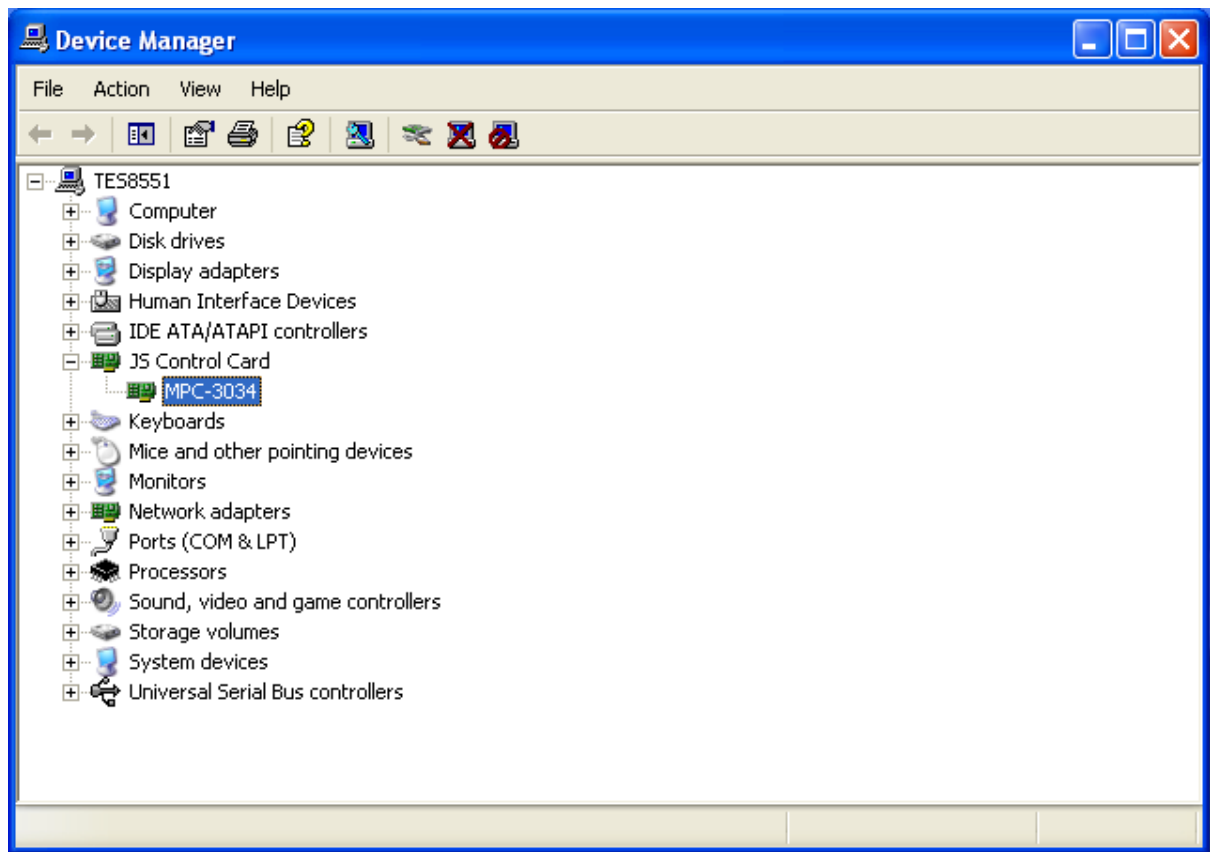
(page-11)

2. Click right button, select 'Property'



(page-12)

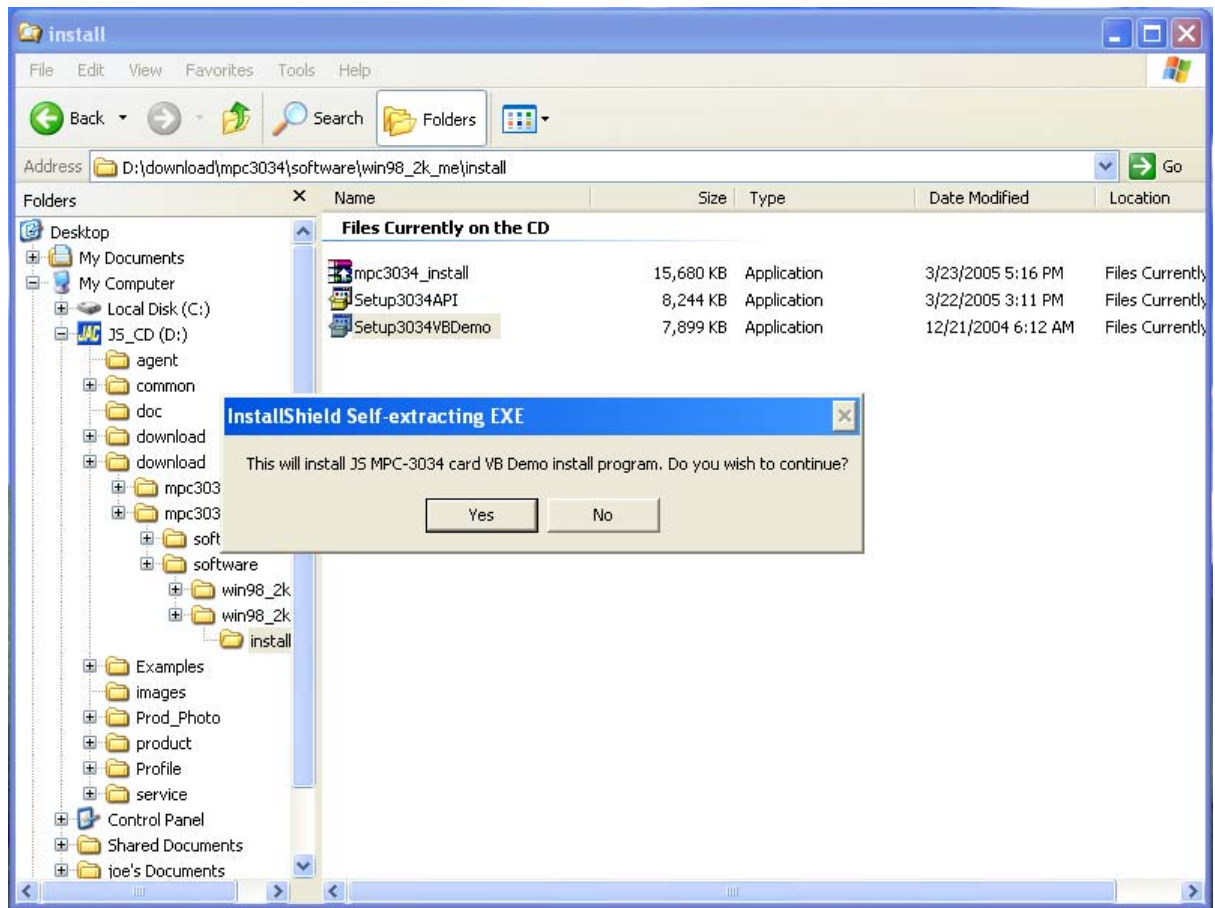
3. Select 'Hardware->Device Manager' to check the install result.



(page-13)

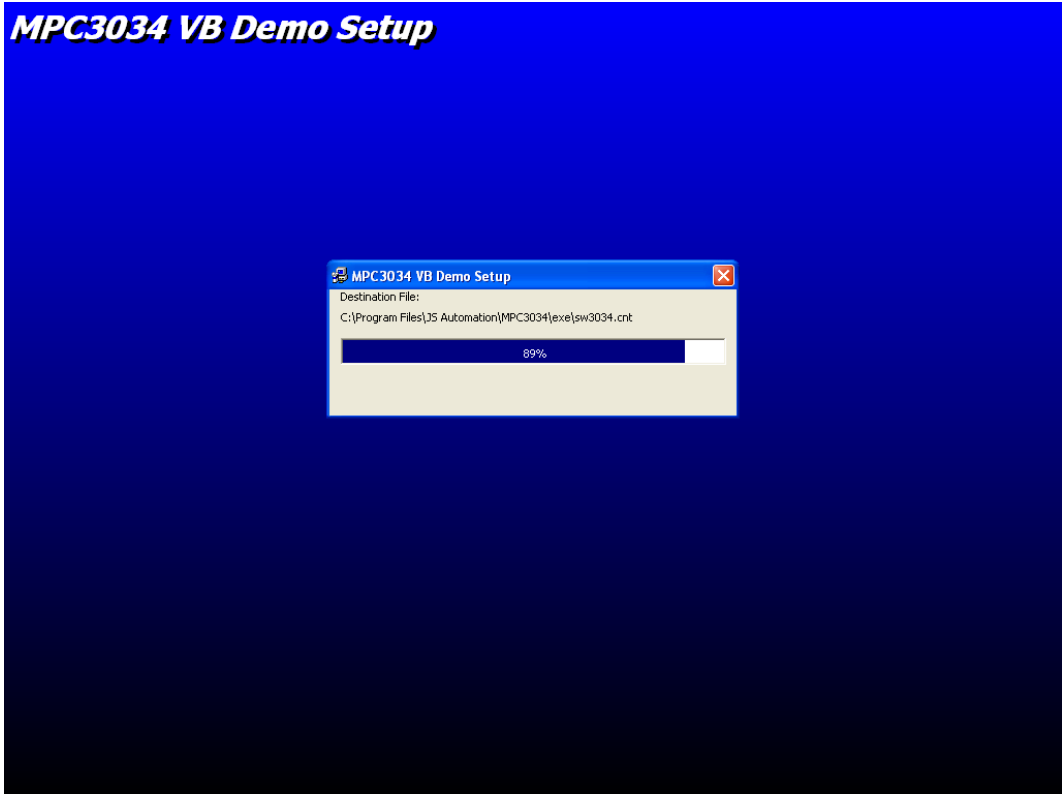
4. There is a new created directory 'JS Control Card' and under it the card installed is listed.

## E. Install demo program



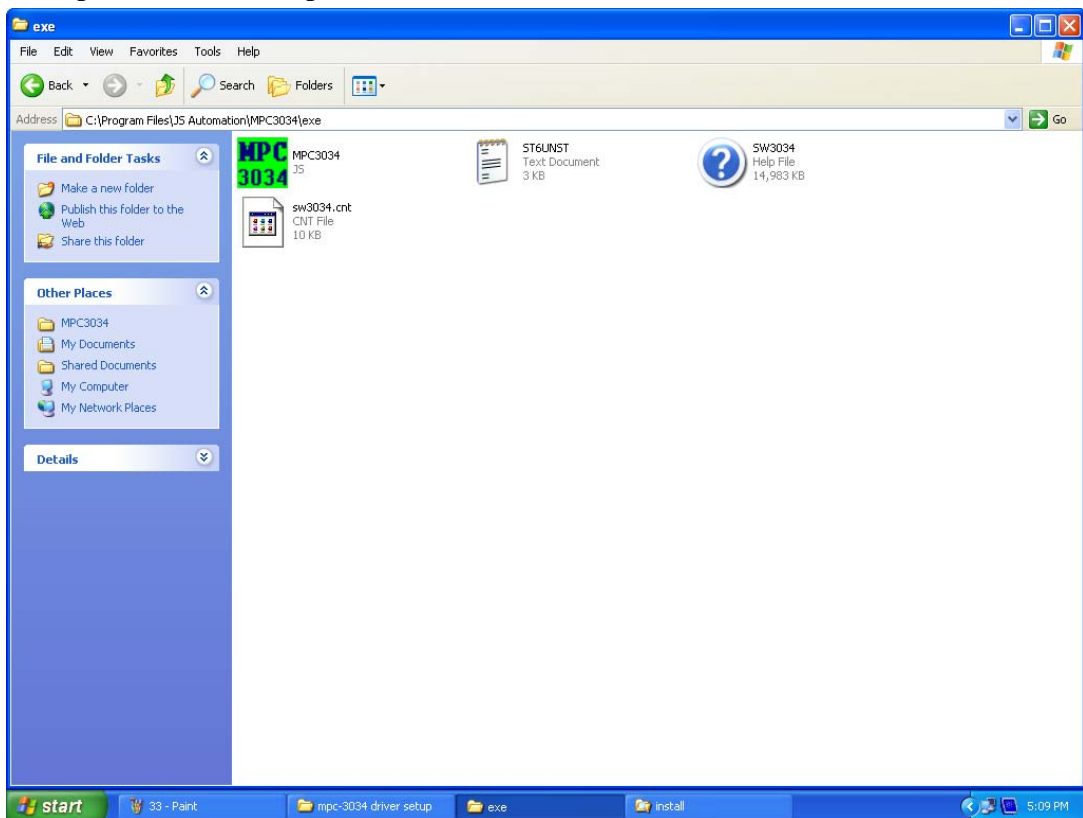
(page-14)

1. Open the directory ..\download\software\win98\_2k\_xp\install
2. Execute instal file 'Setup3034VBDemo', click 'Yes'



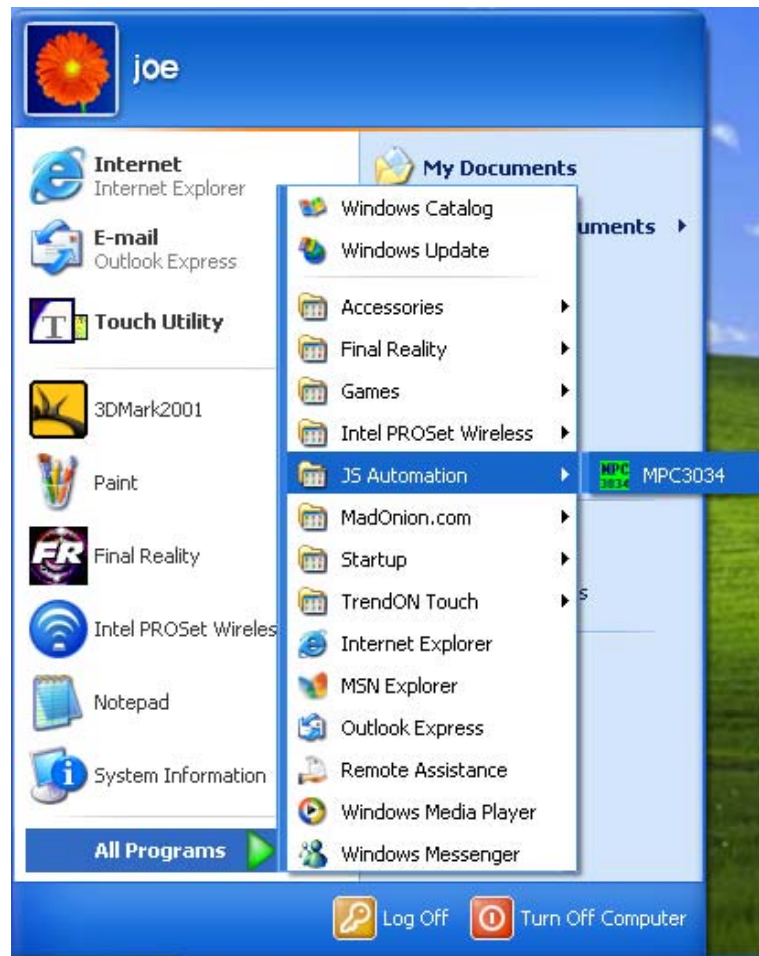
(page-15)

### 3. System copies files and setup demonstration.



(page-16)

4. The demo program installed at \Program Files\JS Automation\MPC3034\exe\  
(mpc3034 as example)

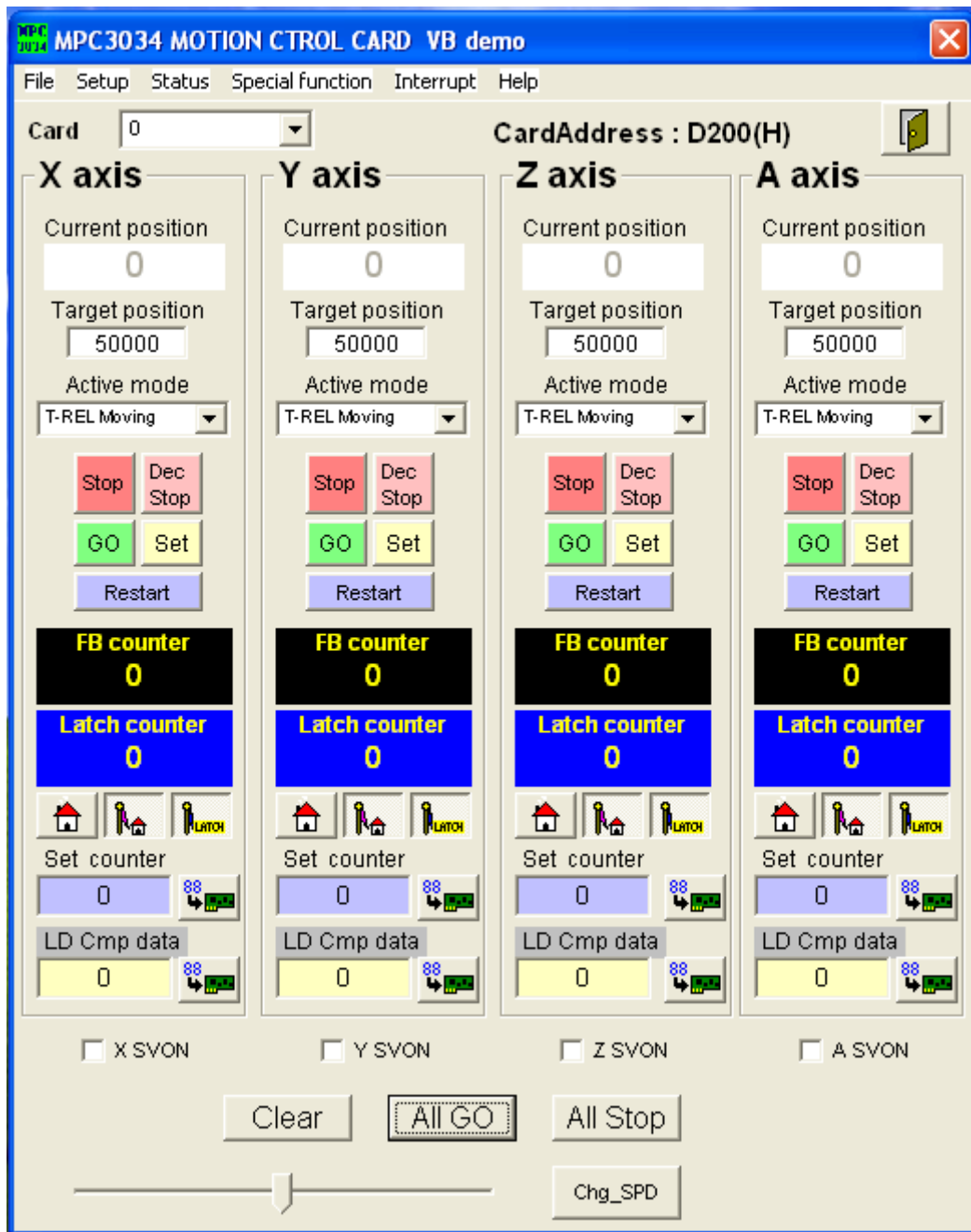


(page-17)

5. The installation also setup new application in the Start->All Programs->  
JS Automation->MPC3034.

6. Now you can select it to run demo program.



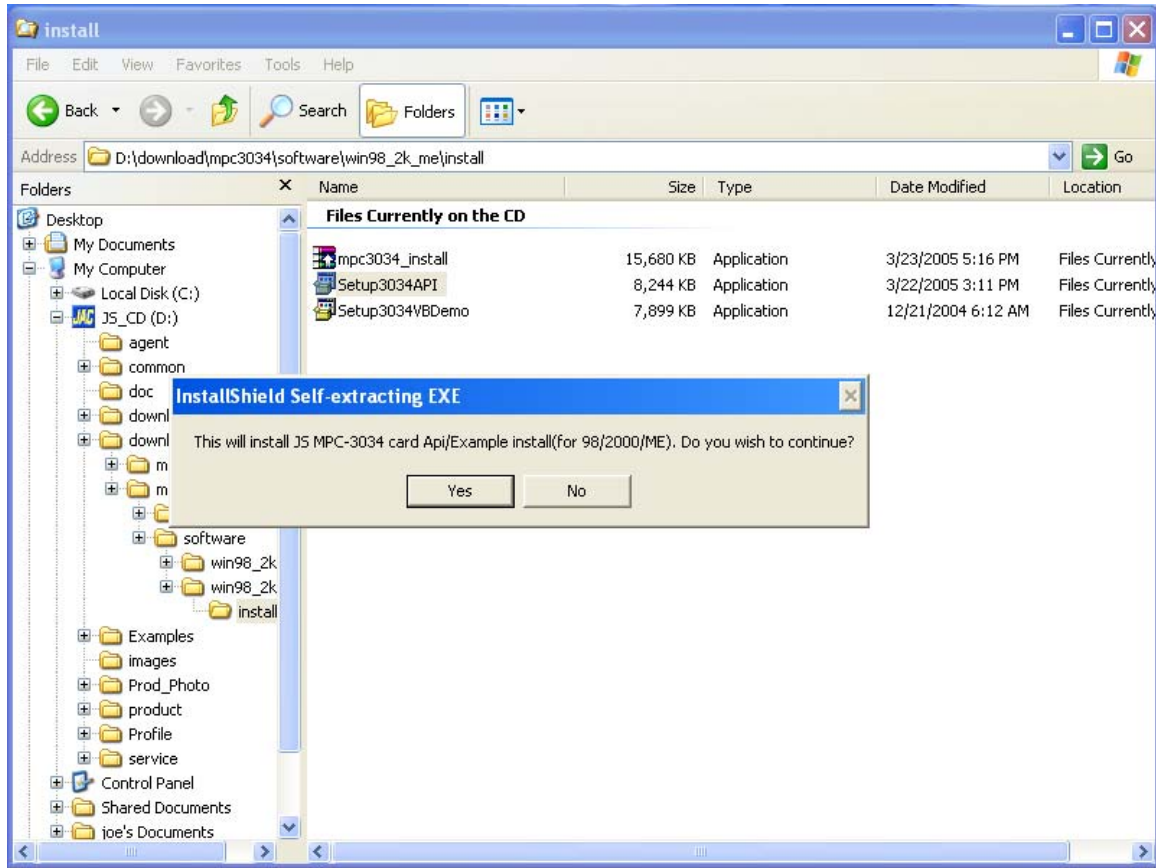


(page-18)

7. The demo program of control card will demos all the function it provide for the green hand user. JS Automation also provide the source code for the user's reference. (To get the source code you must install the API.)

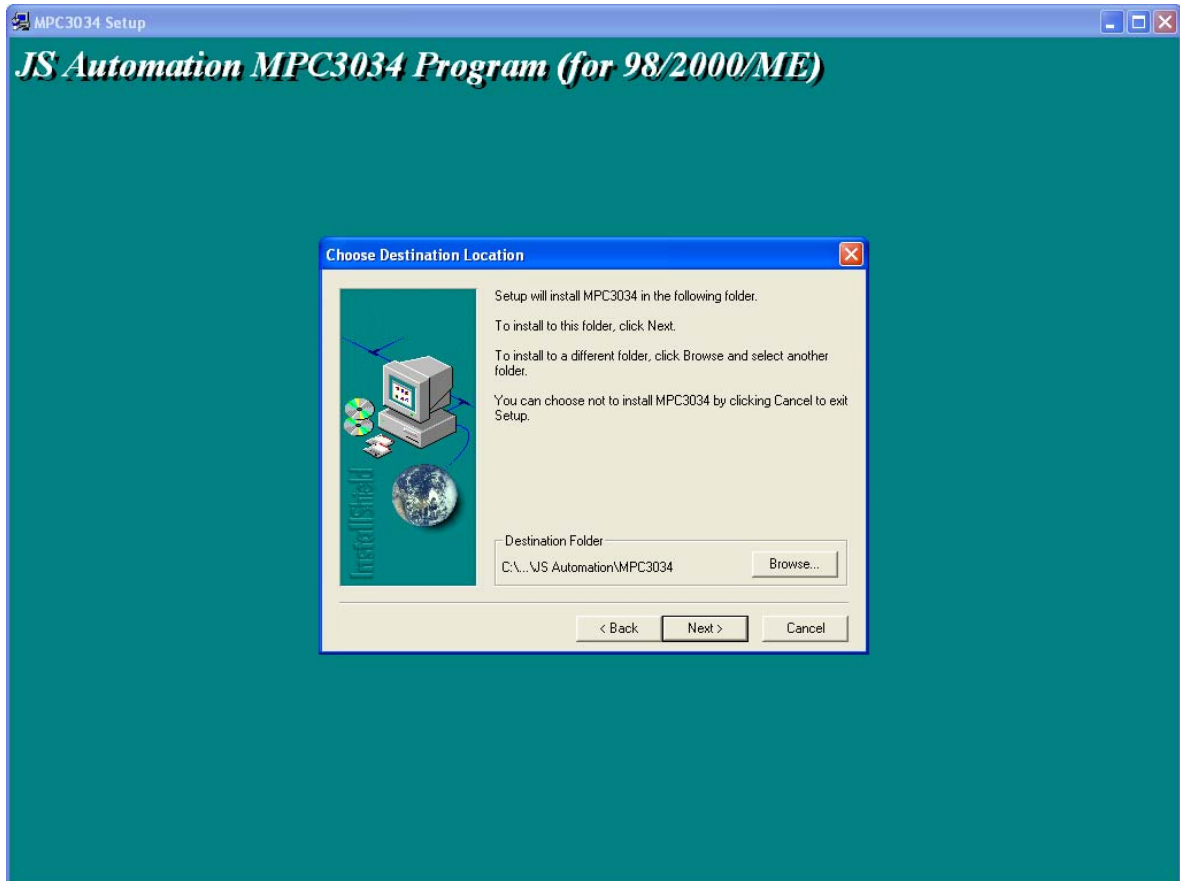
## F. Install the API

The users generally need the header file for VB and VC or Borland C++ builder. JS Automation has prepared the heading for the users. Installation of API can provide this utility and also the source of demo program.



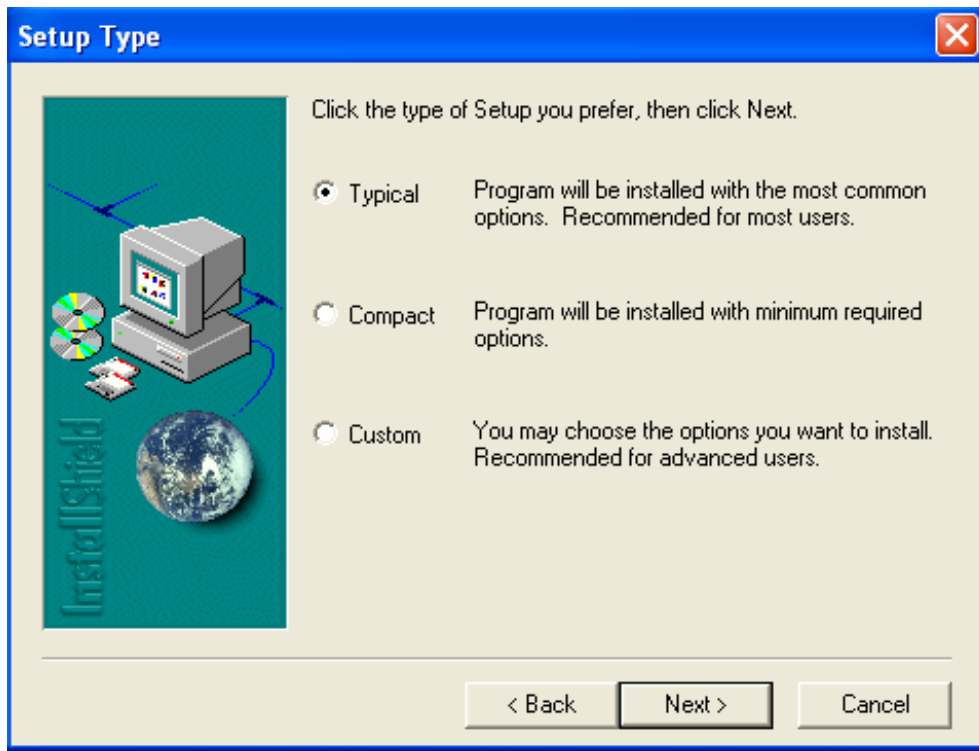
(page-19)

1. Execute Setup3034API from '\download\mpc3034\software\win98\_2k\_xp\_install\'.
2. Click 'Yes' to begin installation.



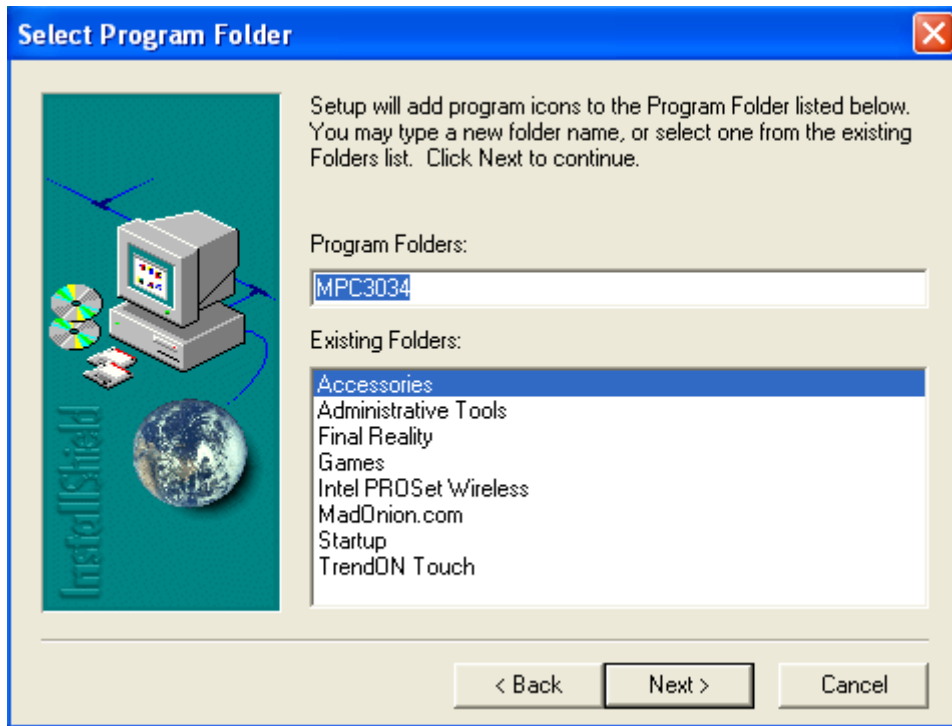
(page-20)

3. Confirm the Destination folder and click 'Next'.



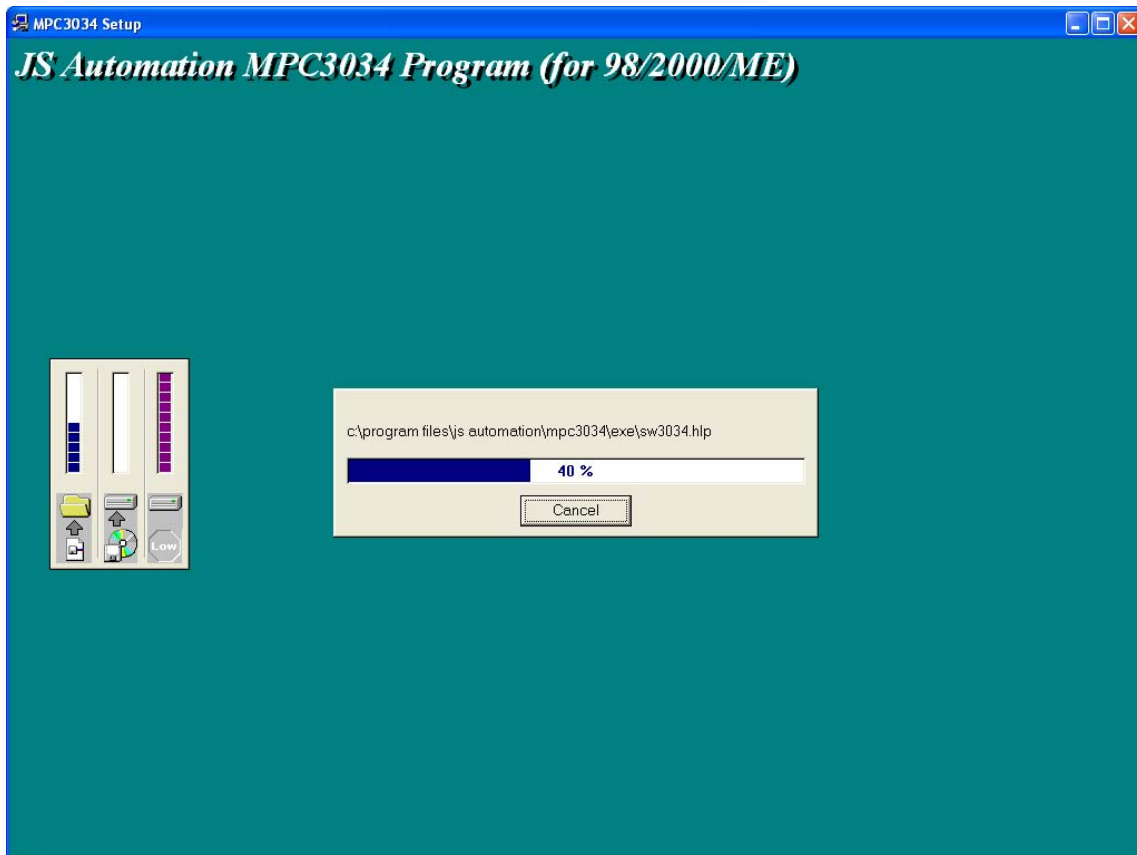
(page-21)

4. Choose 'Typical' and click 'Next'.



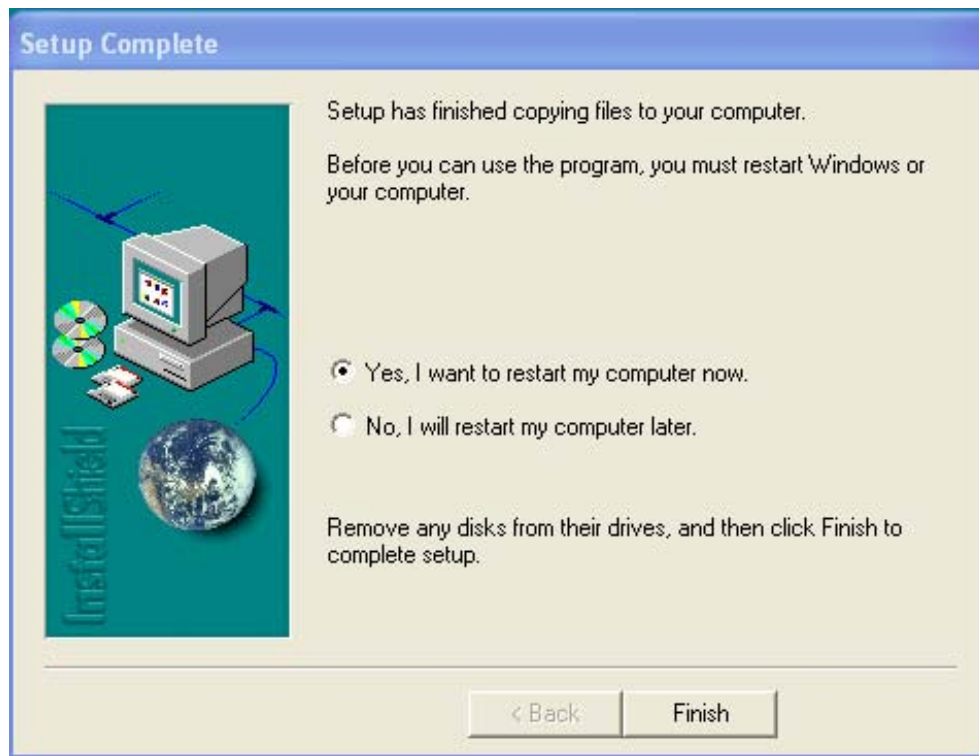
(page-22)

5. Select the icon folder and click 'Next'.



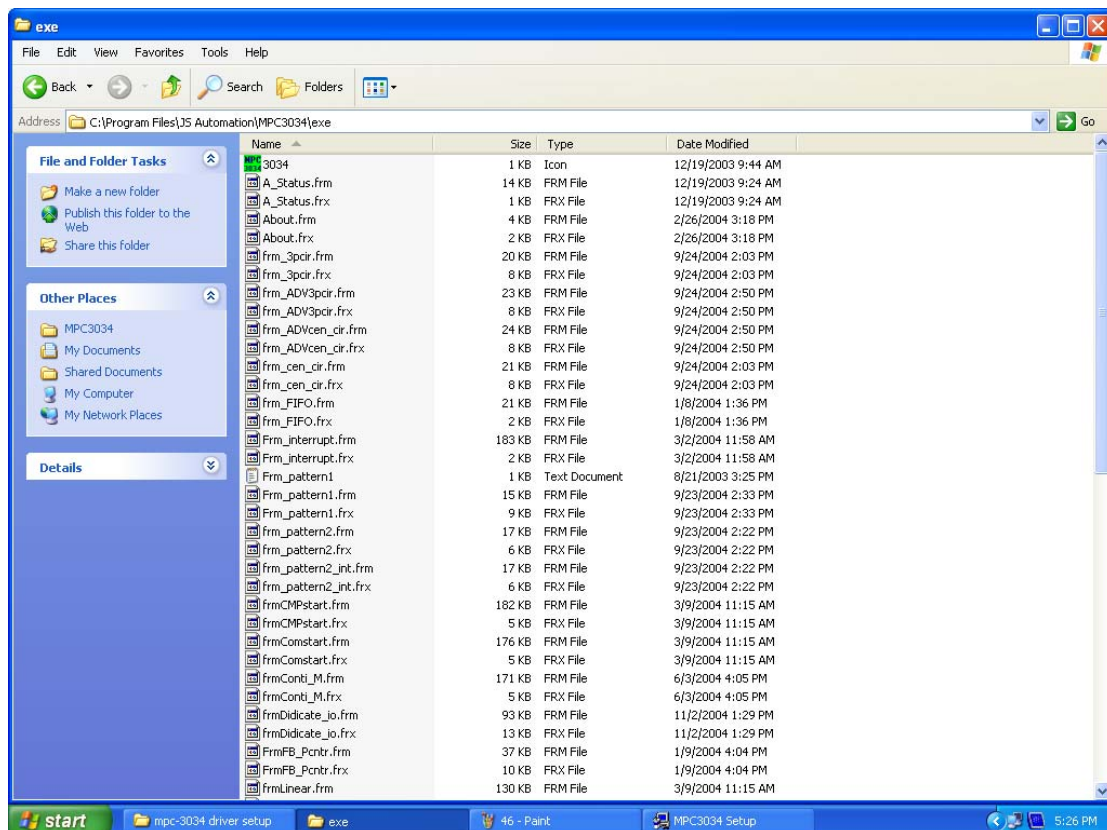
(page-23)

6. Wait for the system copies files.



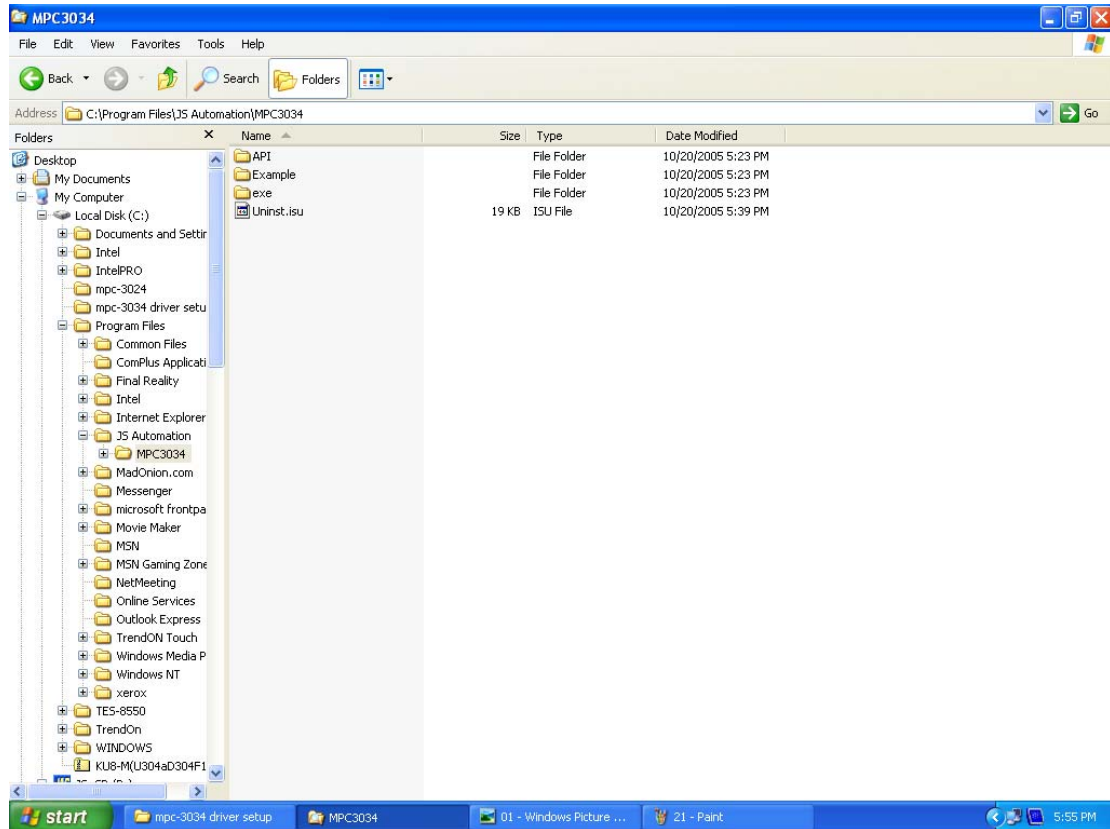
(page-24)

7. Choose any of the choice then click 'Finish' to close the installation.



(page-25)

8. Installation of API will copy source files of demo program to ‘\Program Files\  
JS Automation\MPC3034\exe\’



(page-26)

9. Installation also create 2 new file folders: \API nad \Example.

10. All the header files are in \API

11. The simple example with source code in \Example



(page-27)

12. Installation of API also adds new items to 'Start->All Programs->JS Automation'
13. Now you have installed all the files to your pc.
14. Have fun and luck for your new application.

## G. Install for Labview

1. Copy the folders under '\\download\labview\_driver\' to your labview directory.
2. All the vi functions of control cards will be at hand.

## H. Install for Linux

The JS automation provide the Linux driver with his industrial control cards.  
All the PCI cards named "drvxxxx" (xxxx is the card series number).

JS automation supply the object code on the CDROM when you purchase the product and for the convenience of the user for different Linux versions, we also supply the source code at your request. Please give us your name, company, telephone , fax no. and your application to our email:

control.cards@automation.com.tw

\*\*\*\*\*

How to install the driver

\*\*\*\*\*

#1. To unpack the file, use the "tar" command, Use the syntax :

```
$tar -zxvf <filename>
```

This creates the dioxxxx directory, containing installation scripts, Makefile, driver source , dynamic library, demo source and executing.

#2. Change to <filename> directory.

```
$cd <filename>
```

#3. First install, type "make" to compile the source.

```
$make clean
```

```
$make
```

May see drvxxxx.ko module file.

#4. We will install modules, Dynamic library, Demo and shell script on boot, Use the script command :

```
$/installxxxx setup
```

Then load modules and create device :





```
./installxxxx start
```

Executing demo, You can use the following commands under any directory.

```
$ dioxxxxbdemo
```

#5.Want to uninstall driver , can use the command :

```
./installxxxx uninstall
```

Note : if you change CardID,please type "./installxxxx reload" command first.

Note : if you executing demo and returns error,maybe you have not install QT or KDE library.

Please install QT or KDE by the following instruction:

RedHat : yum install qt\*(kde\*)

Debian : apt-get install qt\*(kde\*)

have any problem? contact us : [control.cards@automation.com.tw](mailto:control.cards@automation.com.tw)