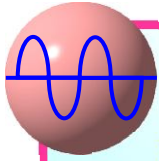


# Bridging the Gap between Real World and Computer



## AIO3310A/1A/2A 8/16/24 Channel Analog Input Card



### Features

- ▶ 8/16/24 channel 16-bit analog inputs (standard : 8 channels)
- ▶ Software selectable input range : -10V~ +10V, -5V~ +5V , 0~10V, 0~5V
- ▶ single end or differential analog input
- ▶ Factory pre-calibrated analog conversion accuracy
- ▶ 2 byte-wide programmable TTL I/O
- ▶ DIO00, DIO01 as trigger/counter in, DIO10,DIO11 as trigger out of timer/counter function
- ▶ 2 32-bit multifunction timer/counters
  - programmable one-shot
  - square wave generator
  - event counter
  - PWM generator

### Introduction

AIO3310A/3311A/3312A involves multi-channels of analog input, multi-functions of digital I/O and timer/counter.

Each analog input channel has been calibrated with precision instruments and all the records kept in the on-card EEPROM to give users a transparent environment of accurate result at competitive low price.

Port programmable TTL I/O and two 32-bit timer/counter provide versatile functions such as : programmable one-shot, square wave generator, event counter, and PWM generator.

Multiple selection 8/16/24 channels to cut down cost as you need.

DII is provided for WinXP, Win7 and later or LINUX platform and sample programs come with VB source code.

### Specifications

(With Matched Wiring Board)

#### Analog Input

- ▶ Input Channel : 8 AI : AIO3310A,  
16 AI : AIO3311A,  
24 AI : AIO3312A
- ▶ Resolution : 16-bit
- ▶ Input Type : single end or differential
- ▶ Input Range : -10V~ +10V, -5V~ +5V , 0~10V, 0~5V
- ▶ Input Impedance: 100K ohm
- ▶ Range Selection : software selectable per chip
- ▶ Conversion Speed : 6us per channel
- ▶ Accuracy : full range within 5mV (after calibration)
- ▶ Integral Linearity Error : -3 ~ +3 LSB(max)
- ▶ Zero Error : - 28 ~ +28 LSB

#### TTL I/O

- ▶ I/O Channels : 16 TTL (port 0, port 1)
- ▶ Configuration : byte input/output
- ▶ Output Capacity : (sink or source) 24ma @5V
- ▶ Output at power on : jumper configurable at high or low

#### Timer/Counter

- ▶ Channels : 2
- ▶ Data Length : 32-bit
- ▶ Specific Input : trigger in/counter in via digital I/O port 0
- ▶ Specific Output : trigger out/counter out via digital I/O port 1
- ▶ Time Base : timer @1MHz, counter @33MHz
- ▶ Multi-Functions : - programmable one-short
  - square wave generator
  - event counter
  - PWM generator

#### Main Card General

- ▶ Interrupt : from TTL or Timer/counter
- ▶ PCI data width : 32-bit
- ▶ Card ID : 4-bit
- ▶ Operation Temperature : 0 °C ~ +70 °C
- ▶ Storage Temperature : -20 °C ~ +80 °C
- ▶ Operation Humidity : 5~95% RH, non-condensing
- ▶ Dimension :156(W)\*112(H)mm, 6.2(W)\*4.5(H)in

### Pin Assignments

JF1		JM1	
-15Vout	37 19	+15Vout	AI8+
GND	36 18	GND	AI9+
AI7-	35 17	+5Vout	AI10+
AI6-	34 16	AI7+	AI11+
AI5-	33 15	AI6+	AI12+
AI4-	32 14	AI5+	AI13+
AI3-	31 13	AI4+	AI14+
AI2-	30 12	AI3+	AI15+
AI1-	29 11	AI2+	AI16+
AI0-	28 10	AI1+	AI17+
IO17	27 9	AI0+	AI18+
IO15	26 8	IO16	AI19+
IO13	25 7	IO14	AI20+
IO11	24 6	IO12	AI21+
IO07	23 5	IO10	AI22+
IO05	22 4	IO06	AI23+
IO03	21 3	IO04	+5Vout
IO01	20 2	IO02	GND
	1	IO00	+15Vout
			AI8-
			AI9-
			AI10-
			AI11-
			AI12-
			AI13-
			AI14-
			AI15-
			AI16-
			AI17-
			AI18-
			AI19-
			AI20-
			AI21-
			AI22-
			AI23-
			GND
			-15Vout



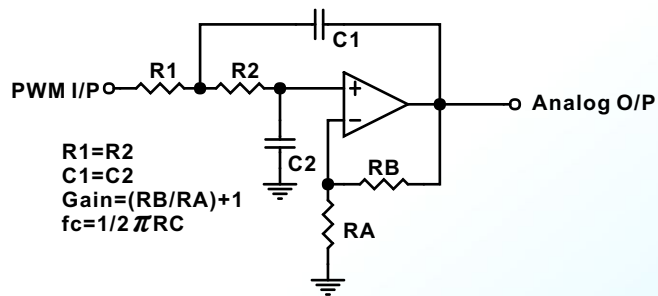
# Bridging the Gap between Real World and Computer

## Applications

- ▶ Analog signal measurement for physical signal of temperature, voltage, current, flow, light...etc
- ▶ digital i/o control of switch input, relay control, trigger output
- ▶ Counter/Timer for event counting, periodic interrupt source, PWM generator, counter/timer with trigger out, duration counter

## Application Tips

- ▶ Using PWM output as D/A converter



## Ordering Information

- ▶ **AIO3310A** : Analog I/O Card 8 channels analog input, 16 TTL I/O and multi function timer/counter
- ▶ **AIO3311A** : Analog I/O Card 16 channels analog input, 16 TTL I/O and multi function timer/counter
- ▶ **AIO3312A** : Analog I/O Card 24 channels analog input, 16 TTL I/O and multi function timer/counter
- ▶ **JS51026** : DIN rail mounted dummy wiring board (D type 37P male to terminals ) for JF1 I.12
- ▶ **M270337X0** : D type 37P male-female cable 1.5M for JF1 I.17
- ▶ **M270337X0S** : D type 37P male-female cable 1.5M, shielding for JF1 I.17
- ▶ **M270337X2** : D type 37P male-female cable 3.0M for JF1 I.17
- ▶ **M270337X2S** : D type 37P male-female cable 3.0M, Shielding for JF1 I.17
- ▶ **SM23403** : Extension kit for JM1 (bracket and flat cable for 37P female D-type connector) (AIO3311A/12A only)

## Software Support

### ▶ PC OS Support

WinXP, Win7 and later or Linux O.S.  
Embedded XP, Win CE (at request)

### ▶ Library

DLLs, VI library

### ▶ Develop Software

Visual C++, Visual Basic,  
Borland C/C++ Builder, LabVIEW etc

### ▶ Example Source Code

Microsoft Visual Basic.NET

## Note