



921 Corporate Way, Fremont, CA 94539, USA  
Tel: +1-510-490-8024, Fax:+1-510-623-7268  
Web: <http://www.actisys.com>, E-mail: [irda-info@actisys.com](mailto:irda-info@actisys.com)

## ***ACT-IR224UN / ACT-IR424UN***

### ***USB to RAW SIR Serial Adapter***

#### ***User's Manual***



**ACT-IR224UN**



**ACT-IR424UN**

**January 31, 2013**

**Version 1.3.2**

**© Copyright 2005-2013 ACTiSYS Corporation  
All Rights Reserved**

**Warning! Please Install Driver BEFORE  
you plug in the Dongle to USB port.**

## TABLE OF CONTENTS

<b>REVISION HISTORY .....</b>	<b>4</b>
<b>1 OVERVIEW .....</b>	<b>5</b>
<b>2 FEATURES .....</b>	<b>5</b>
<b>3 PACKAGE CONTENT .....</b>	<b>5</b>
<b>4 SPECIAL NOTICE &amp; SYSTEM REQUIREMENT .....</b>	<b>6</b>
4.1 Special Notice.....	6
4.2 System Requirement.....	6
<b>5 FAQ (FREQUENTLY ASKED QUESTIONS).....</b>	<b>6</b>
<b>6 CONFIGURATION UTILITY .....</b>	<b>7</b>
<b>7 MIGRATION FROM OTHER MODELS.....</b>	<b>9</b>
7.1 For ACT-IR220LN Series Users .....	9
7.2 For ACT-IR220Li, ACT-IR220L & ACT-IR220L+ Users.....	9
7.3 For ACT-IR204UN Users.....	9
7.4 For JetEye & iFYS RS232 IR Adapter Users.....	10
<b>8 GENERAL SETUP PROCEDURE – WINDOWS, ANDROID, LINUX &amp; MAC.....</b>	<b>10</b>
<b>9 INSTALLATION UNDER WINDOWS .....</b>	<b>11</b>
9.1 Definition of “New Chip Inside” .....	11
9.2 General Notes – Windows vs. Chip Inside .....	11
9.3 CD Installation Steps .....	11
9.4 Driver Installation .....	12
<b>10 INSTALLATION UNDER MAC OS.....</b>	<b>15</b>
<b>11 INSTALLATION CHECK .....</b>	<b>17</b>
11.1 Using Configuration Utility for Windows To Check.....	17
11.2 Check “Add or Remove Programs” or “Programs and Features” in Windows .....	17
11.3 Device Manager Check in Windows.....	18
11.4 Terminal Check in Mac Machine .....	19
11.5 Android And Linux Based Equipments.....	19
<b>12 UNINSTALL THE DRIVER .....</b>	<b>20</b>
12.1 Uninstall The Driver From Windows 98/ME/2000/XP .....	20
12.2 Uninstall The Driver From Windows Vista /Win 7/8 (32 & 64 bits) .....	22
12.3 Uninstall The Driver From Mac OS .....	24
<b>13 APPLICATION GUIDELINE FOR CONFIGURATION UTILITY.....</b>	<b>25</b>
13.1 Refresh .....	25
13.2 Read Configuration .....	25
13.3 Factory Default Setting .....	25
13.4 Write Configuration.....	25
<b>14 USING ACT-IRX24UN UNDER WINDOWS.....</b>	<b>26</b>

---

<b>15</b>	<b>LED BEHAVIOR</b> .....	<b>26</b>
<b>16</b>	<b>IR DONGLE DIMENSIONS</b> .....	<b>26</b>
<b>17</b>	<b>CHARACTERISTICS AND SPECIFICATION</b> .....	<b>26</b>
<b>18</b>	<b>APPENDIX : TURN UAC ON/OFF IN WINDOWS VISTA /WIN 7/8</b> .....	<b>27</b>
18.1	Check current UAC (User Account Control) Status.....	27
18.2	Turn On / Off UAC .....	28
<b>19</b>	<b>WARRANTY INFORMATION</b> .....	<b>29</b>
<b>20</b>	<b>CONTACT INFORMATION</b> .....	<b>30</b>

## REVISION HISTORY

Revision History		
Revision	Date	Comment
1.0	10/30/2006	Initial release
1.0.1	01/03/2007	Extracted Chapt. of detailed description for models & IR pulse format
1.1	01/25/2007	<ul style="list-style-type: none"> <li>• Added new configuration models and re-edited the chapter</li> <li>• Expanded function models to include competitors' compatible models</li> </ul>
1.1.1	04/14/2007	Removed IrReady label from dongle case; added CRoHS logo
1.1.2	04/25/2007	<ul style="list-style-type: none"> <li>• Revised Un-installation Chapters for utility &amp; driver; added FAQ</li> <li>• Modification in Installation Package for one time removal of both utility &amp; driver at a click</li> </ul>
1.1.3	05/16/2007	<ul style="list-style-type: none"> <li>• Not released officially. Only for Internal use</li> </ul>
1.1.4	05/22/2007	<ul style="list-style-type: none"> <li>• Modification In Utility GUI (COM Port Listing, Check For IR224UN During Launching Etc)</li> <li>• Removed Installation Package For Utility Program.</li> <li>• Modified Chapter Of Installation &amp; deleted section of Configuration insatallation &amp; Chapter of Configuration un-installation</li> <li>• Modified Chapter 14 for USB spec 2.0</li> </ul>
1.1.4.1	05/30/2007	<ul style="list-style-type: none"> <li>• Rewrite Chapter of General setup procedure. Added section of "Using configuration utility to check"</li> </ul>
1.1.5	08/28/2007	<ul style="list-style-type: none"> <li>• Included Driver installation/un-installation procedure under Windows Vista OS.</li> <li>• Included "UAC" Security features of Windows Vista OS in FAQ section &amp; Appendix.</li> <li>• Omitted IR mate 210 function</li> </ul>
1.1.6	09/27/2007	<ul style="list-style-type: none"> <li>• Firmware upgraded from version 1.2 to 1.3</li> <li>• Modified in Configuration Utility (based on firmware change)</li> <li>• FAQ updated in User Manual</li> </ul>
1.1.7	10/17/2007	<ul style="list-style-type: none"> <li>• Added Chapter 4 Special Notice &amp; System Requirement</li> </ul>
1.1.8	10/28/2008	<ul style="list-style-type: none"> <li>• System requirement included Win 98, ME, Win CE, Linux, &amp; Mac</li> </ul>
1.1.9	7/22/2009	<ul style="list-style-type: none"> <li>• Added installation chapter, installation check section and uninstallation section for Mac. Added Factory Default Setting section. Modification in Configuration Utility.</li> </ul>
1.2.0	7/15/2010	<ul style="list-style-type: none"> <li>• Update all-in-1 driver installer v1.2.10 (4/08/2010) for Windows series which Win 7 included.</li> </ul>
1.2.0.2	6/20/2011	<ul style="list-style-type: none"> <li>• Included Android OS.</li> </ul>
1.3.0	9/14/2012	<ul style="list-style-type: none"> <li>• Updated driver installer to v1.5.0 (2011-10-21) for Win, and v1.4.0 for Mac; rewrted all for Mac; Combined with thumb size model IR424UN.</li> </ul>
1.3.1	12/11/2012	<ul style="list-style-type: none"> <li>• Update to include Windows 8</li> </ul>
1.3.2	1/31/2013	<ul style="list-style-type: none"> <li>• Updated installation procedure for New/Old Chip Inside, for Windows 8, etc.</li> </ul>

ACTISYS reserves the right to make changes without further notice to any products herein to improve reliability, function or design. ACTISYS does not assume any liability arising out of the application or use of any product or circuit described herein. All trademarks, logos, organization & company names and product model names are the properties of their respective owners.

## 1 OVERVIEW

ACT-IR224UN is an USB-to-raw-IR adapter, which can generate a virtual COM port for user to transmit data with other raw IR devices without IrDA protocols required. And its driver will help user to make IR connection without changing any Application Program in PC which is only equipped with USB for COM port access.

ACT-IR424UN is the thumb size model of ACT-IR224UN. It is more portable and its USB cable is separated.

Hereafter, ACT-IRx24UN represents both ACT-IR224UN and ACT-IR424UN.

## 2 FEATURES

- a. Supports 8 baud rates: 1.2k, 2.4k, 4.8k, 9.6k, 19.2k, 38.4k, 57.6k and 115.2k bps.
- b. 1.63  $\mu$ s IR pulse.
- c. Supports No IrDA<sup>®</sup> protocols, **only Raw IR**.
- d. Compatible with and replaces RS232 Raw IR adapters: ACT-IR220L+, ACT-IR220L, ACT-IR220Li and ACT-IR220LN, competitors' models: JetEYE 9680 Level mode & Pulse mode, IFSYS 8001A Level mode & Pulse mode. A Windows utility software is provided to simulate those models.
- e. Supports Virtual COM port. Nothing or minimum changes in user's software which are already working with original RS232 adapters.
- f. Less Latency time, average is 1.5 ms. The latency of a real COM port is about 0.5ms.
- g. Fully compliant with USB 2.0 (Full speed, 12 Mbps).
- h. 256 bytes outbound buffer and 256 bytes inbound buffer.
- i. Supports Windows 98/ME/2000, [Win XP SP2/Vista/Win 7/8 /Win Server 2003/Win Server 2008 \(32 & 64 bits\)](#), Mac OS X 10.1 to 10.7 (includes 64-bit) Also supports Mac OS X Lion 10.7, Linux, [Android](#) & Windows-CE (ARM & x86).
  - JetEye and IFSYS are the trademarks and properties of their respective owners.

## 3 PACKAGE CONTENT

ACT-IRx24UN IR Adapter x1; separated USB cable for ACT-IR424UN.

Installation CD x1, which includes:

- a. Device driver installer
- b. Configuration Utility Program
- c. User's Manual.
- d. Quick Installation Guide

## 4 SPECIAL NOTICE & SYSTEM REQUIREMENT

### 4.1 Special Notice

#### 4.1.1. Timing of COM Port Closing

ACT-IRx24UN uses DTR and RTS signals to configure IR communication speed and has 256 bytes inbound buffer & 256 bytes outbound buffer. Normally this *Raw IR* transmitting dongle has *no flow control protocol*. So, if the sending side has completed its sending but some data in dongle buffer still pending transmission before you close the COM port, DTR and RTS signal will get change consequently. This will also cause the *baud rate change*. In such a case the receiver will get junk data. To prevent this, we recommend giving some *delay time before closing the port*, which ensures all pending data being sent out completely.

#### 4.1.2. Improve the Throughput

We recommend sending bulk of data rather than byte-by-byte data to achieve good throughput. E.g., send the entire data as a whole, instead of calling the write API one byte at a time. If your data size is too big, then you can send them in multiple blocks.

### 4.2 System Requirement

1. Windows 98/ME/2000 SP4, Win XP SP2/ Windows Vista/7/8 (32 & 64 bit), Windows Server 2003/2008 (32 & 64 bit). Win CE, Mac. OS X 10.1 to 10.7 includes 64-bit, and Mac OS X Lion 10.7 [Android](#) or Linux.
2. At least 256MB RAM (512MB is recommended).
3. Processor Speed 1.8 GHz.
4. USB 1.1 port (or above).

## 5 FAQ (Frequently Asked Questions)

- **Q1:** When we use ACT-IRx24UN, occasionally at the end of communication, a few bytes show as junk in receiver side. Why? And how to solve?
- **A1:** Please refer to [4.1.1 "Timing of COM Port Closing"](#) in section 4.1 Special Notice.
- **Q2:** How to improve the channel utilization or throughput?
- **A2:** Please refer to [4.1.2 "Improve the Throughput"](#) in section 4.1 Special Notice.
- **Q3:** While uninstalling the ACT-IR224 Configuration utility or Driver, Windows prompts to Restart. Do I need to restart the PC?
- **A3:** Yes! We highly recommend restarting the PC so that you can complete the Uninstallation successfully.

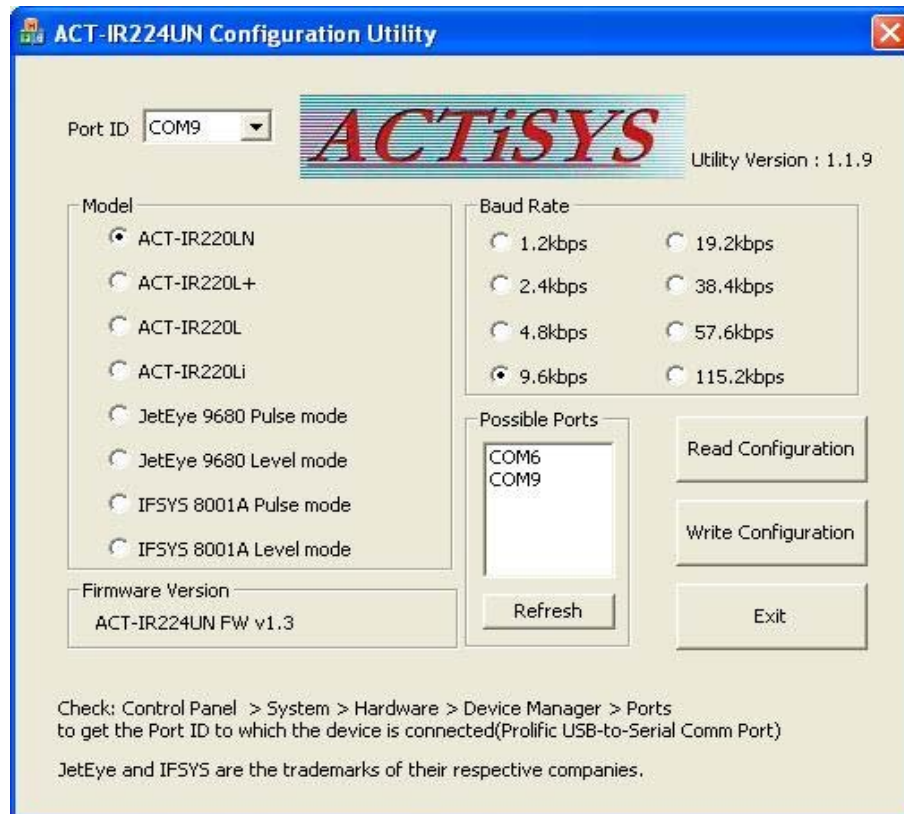
- **Q4:** In some Windows XP, while Uninstalling the driver (from “**Add or Remove Programs**”), it is not restarting automatically when I select “Yes” to restart. Why?
- **A4:** We recommend Method 1 in Chapter 12 to uninstall the driver. If system still doesn't restart automatically, it is highly recommended to restart manually.
- **Q5:** In Windows Vista/Win 7/8, I am getting an “**elevation prompt**” of the **administrator permission** each time I perform any new driver installation/uninstallation or running any new application. Why?
- **A5:** Windows Vista/Win 7/8 have added a new Security Feature called as “**UAC (User Account Control)**”. So, in such OS, if **UAC has been turned on** (refer to [Appendix](#)) then you will get an “**elevation prompt**” of the administrator permission each time you perform any new driver **installation/uninstallation** like follows. In that case, Press Allow button and continue your driver installation/uninstallation.



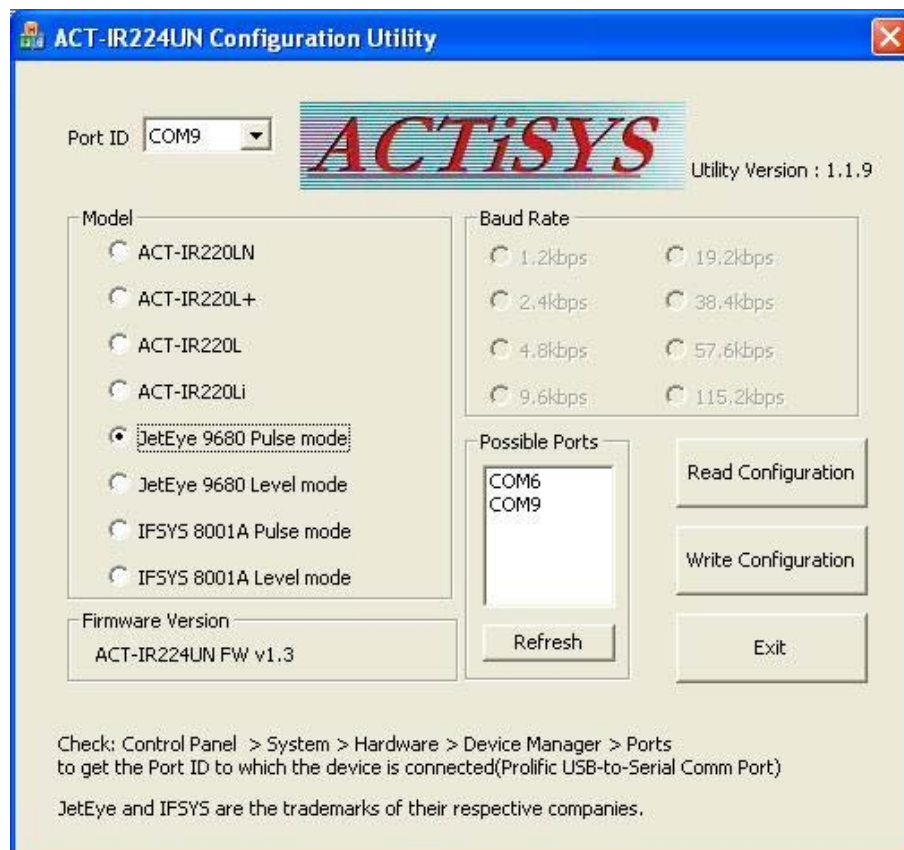
In general, with “**Administrator Approval Mode**”, Windows Vista/Win 7/8 will run most applications with **standard user permissions** even if the user is an **administrator**. If a user wishes to run a program that requires **administrator permissions**, they **must give consent** through a **User Account Control** prompt.

## 6 CONFIGURATION UTILITY

ACT-IRx24UN supports ACTiSYS RS232 Raw IR adapters (ACT-IR220L+, ACT-IR220L, ACT-IR220Li, ACT-IR220LN) and the other competitor's IR adapters. ACTiSYS provides a **Configuration Utility** for Windows (Note: not for Mac, Android or Linux) as the following figure. You can select a proper model as you are using right now. For example, if you are using ACT-IR220LN96, you can just select “Port ID”, say, COM9, “Model” as ACT-IR220LN and “Baud Rate” as 9.6 kbps. Then press “Write Configuration”.



**Note :** "ACT-IR220LN" is the only model that you need to select baud rate from this utility. Baud Rate selection will be disabled when select the other models, e.g. JetEye 9680 Pulse mode as below:





## 7 MIGRATION FROM OTHER MODELS

If you use RS232-based IR adapters or ACT-IR204UN, and now are in migrating to ACT-IRx24UN, you need to know the following details:

- When insert ACT-IRx24UN CD in Windows, Configuration Utility software will be automatically installed. (Note: for Mac, Android, or Linux users, still need to pre-set all parameters in Windows before you use it in any other OS.)
- Please select the appropriate Model using configuration utility.

### Note: For Volume Orders

You may inform us IR adapter model in use, and we can pre-set it for you at factory, so you don't need to configure at your site. Your P/O can use one of these model names:

● ACT-IRx24UN-LN96	● ACT-IRx24UN-L+
● ACT-IRx24UN-LN19	● ACT-IRx24UN-JE-pulse
● ACT-IRx24UN-LN38	● ACT-IRx24UN-JE-level
● ACT-IRx24UN-LN57	● ACT-IRx24UN-IF-pulse
● ACT-IRx24UN-LN115	● ACT-IRx24UN-IF-level
● ACT-IRx24UN-Li	

### 7.1 For ACT-IR220LN Series Users

Select ACT-IR220LN as your adapter model using Configuration utility. Then select baud rate directly from this Utility. (Note: Baud rate is fixed). Your customized application doesn't require any change. Make sure your application supports virtual COM Port. Some application cannot handle COM Port greater than 4 or 9. Such application needs to be updated.

### 7.2 For ACT-IR220Li, ACT-IR220L & ACT-IR220L+ Users

Select appropriate model as your existing adapter model name using Configuration utility. Your customized application doesn't require any change. Make sure your application supports virtual COM Port. Some application cannot handle COM Port greater than 4 or 9. Such application needs to be updated.

### 7.3 For ACT-IR204UN Users

When opening the COM Port (with specified baud rate), ACT-IR204UN will set the same baud rate of COM Port to IR communication module whereas ACT-IRx24UN will set the baud rate to the COM Port only and not to the IR communication module. Application must use DTR & RTS signal in virtual COM Port to set IR communication baud rate, in addition to Virtual COM port baud rate. For

baud rate setting details, please refer to Chapter of "Detailed Description for Models" in Technical Manual (will be provided upon request). ACT-204UN has ACTiSYS own driver while ACT-IRx24UN uses Prolific driver.

#### 7.4 For JetEye & iFYS RS232 IR Adapter Users

Select appropriate model as your existing adapter model name using Configuration utility. Your customized application doesn't require any change. Make sure your application supports virtual COM Port. Some application cannot handle COM Port greater than 4 or 9. Such application needs to be updated.

## 8 GENERAL SETUP PROCEDURE – WINDOWS, ANDROID, LINUX & MAC

- a) **Make sure USB dongle is NOT plugged into PC until you have installed the driver.**
- b) From "Add or Remove Program" in Control Panel of Win 98/ME/2K/XP, or from "Programs and Features" in Control Panel of Windows Vista /Win 7/8, check if "PL-2303 USB-to-Serial" or "PL-2303 Vista Driver Installer" exists. If exists, please **remove it first**.
- c) Insert the installation CD and it will install driver for Windows 98/ME/2K/XP/Vista/Win 7/8 automatically.
- d) **Manually SETUP under WinCE, Android, Linux or Mac OS:**  
**Run SETUP yourself under WinCE, Android, Linux or Mac** since it will not autorun for you. Please direct browse the installation CD to find the path: D:\Driver (assume D:\ is your CD driver). Then select the right folder under it, say "Linux\_RedHat" for example and extract the packaged file for use.  
**Note: Google Android OS is also based on Linux kernel actually.**  
**Linux driver is for RedHat 7.3/8.0/9.0 Only. Some other newer versions may have built in drivers already. So no need to install drivers yourself for them.**
- e) Sometimes you may find it not AUTORUN in Windows, especially in Vista/Win 7/8. Make sure the "AUTORUN" option under "Control Panel=> AUTOPLAY" has been selected in Vista/Win 7/8. Or else browse the CD and manually run **ACT-IR224UN-DriverInstaller\_v#.#.#-YYYYMMDD.exe**, where # is its version number and YYYYMMDD is its release date. **e.g.,**  
**ACT-IR224UN-DriverInstaller\_v1.7.0-20120801.exe.**
- f) Plug the IR adapter into USB port. It will lead you to a "Found New Hardware" procedure to complete the installation.

## 9 INSTALLATION UNDER WINDOWS

### 9.1 Definition of “**New Chip Inside**”

For those dongles which their **SN** (Serial **N**umber on the SN label, at the back side of the dongle) has Prefix “TA”, say, **S/N: TA000168**, these dongles have “**New Chip Inside**”. The new chip inside is **PL2303TA**.

Else, say, **S/N: LI001357**, or **S/N: UN002468**, etc., these are with **Old Chip inside: PL2303HXA**.

### 9.2 General Notes – Windows vs. Chip Inside

#### Case1. Windows 8 User, New Chip Inside:

Please skip below CD installation steps. Just plug the dongle and OS will auto find the hardware for you. Just in case not succesful, please run the latest version of Driver Installer, v1.7.0.

#### Case2. Windows 8 User, Old Chip Inside:

In order to prevent from going into endless circle between Windows Update and roll back again, please firstly **disable “*automatically updating*”** from [Windows Update](#). Because **the native driver of Windows 8 does Not support Old Chip!** Do also **Not run Driver Installer v1.7.0**, because it **does Not Support Old Chip**, either! Please **run Driver Installer v1.5.0** instead.

For details of above procedure, please refer to another file:

**[ACT-IRx24UN-Win8Drv-Workaround-120926.pdf](#)** which in the same folder under the installation CD.

#### Case3. Windows Vista / 7, either New Chip or Old Chip Inside:

Please follow [Case1](#).

#### Case4. Windows XP and under, either New Chip or Old Chip inside:

Please directly **run Driver Installer v1.7.0**, from installation CD.

### 9.3 CD Installation Steps

1. Insert the installation CD. In most cases this should start the installation automatically. And the first step it will copy the following files to the path:  
“C:\Program Files\ACTiSYS\ACT-IRx24UN”
  - ACT-IRx24UN Quick Guide & User’s Manual.
  - ACT-IRx24UN Configuration utility.
  - ACT-IRx24UN DriverInstaller is copied to the subdirectory named “Driver”.
2. If the installation Does start automatically, go to the next section: [Driver Installation](#).
3. Else, explore the CD contents
4. Double click “**ACT-IR224UN-DriverInstaller\_v#.##-YYYYMMDD.exe**” for Windows.

## 9.4 Driver Installation

### 9.4.1 Driver Installation – Windows 8 (32 & 64 bit)

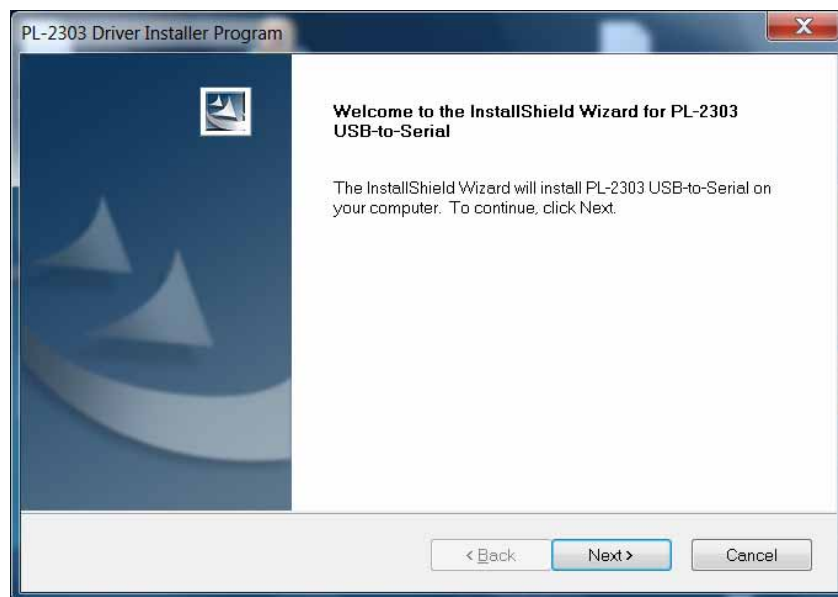
Please refer to section 7.1 **Definition of New Chip Inside**. Check your chip inside first.

If your chip inside is New, follow above section [Case1](#).

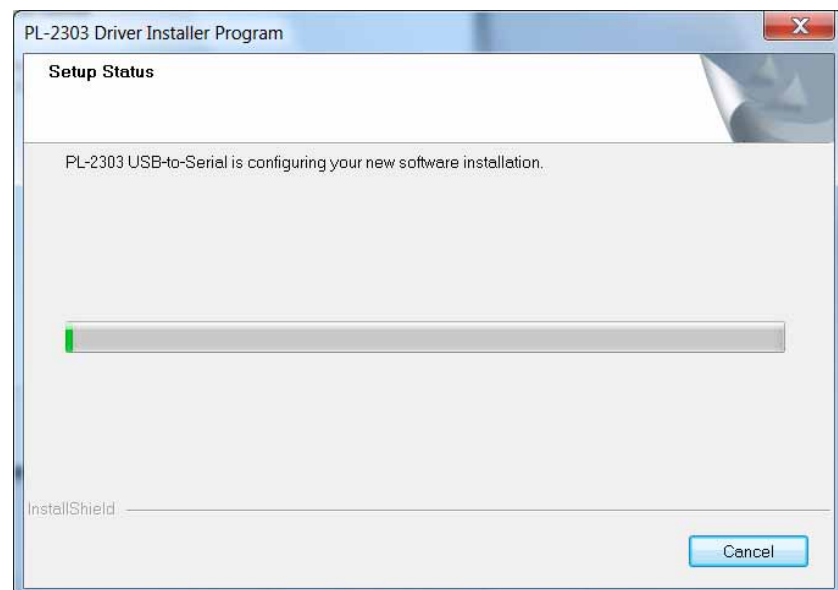
Else, follow above section [Case2](#), for Old Chip inside.

### 9.4.2 Windows Vista /Win 7 (32 & 64 bit)

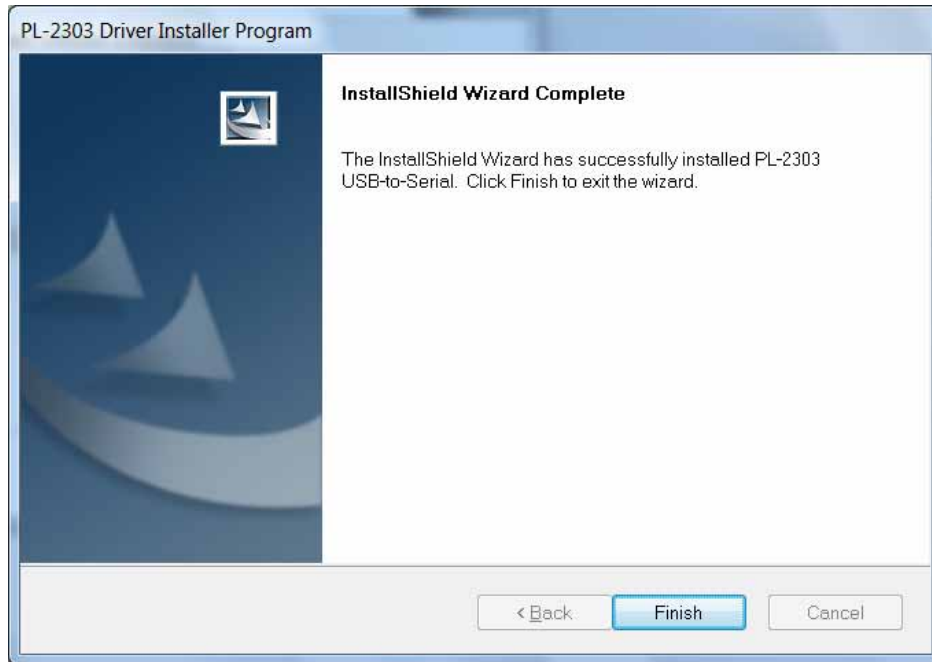
1. When start the driver installation, you may get “elevation prompt” of “(UAC)” if UAC has been turned ON in your Windows Vista OS (see [FAQ](#) for details). Else a welcome screen for PL-2303 Driver installer will show up. Click “Next” to continue.



2. You will see the Driver Installer under processing:



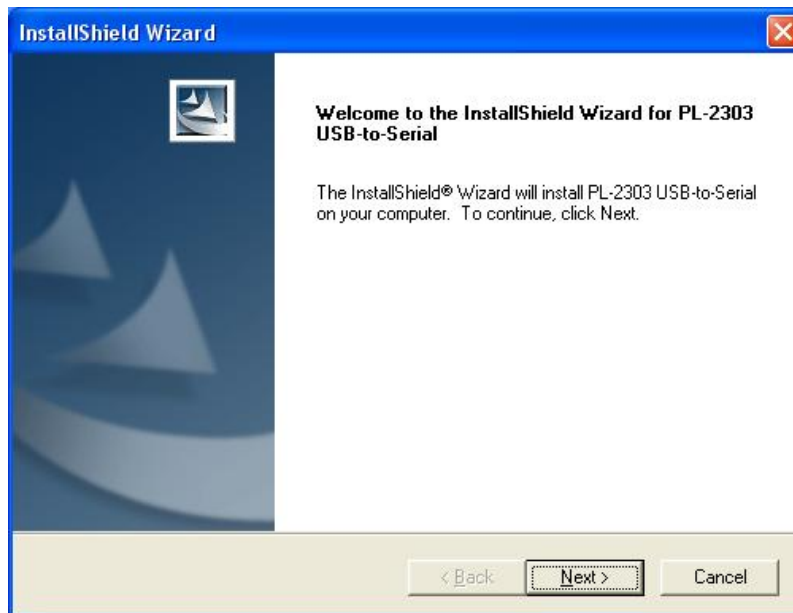
- When this Installation completes, click “Finish” to close the Wizard window.



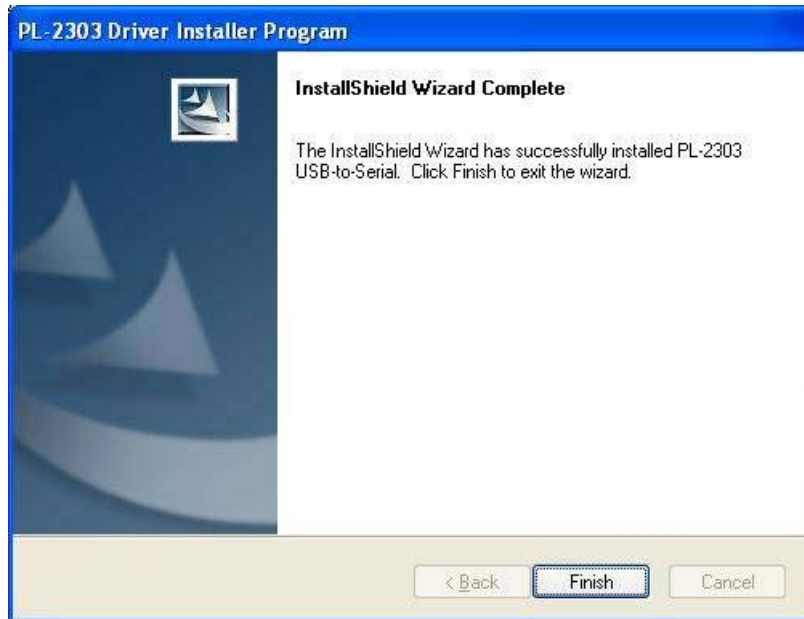
- Now plug IR adapter to USB port. System will pop up a “Found New Hardware” bubble window at the right corner of Tool Bar and display the message: “Prolific USB-to-Serial Comm Port” the first time you plug in.
- This completes the driver installation. Now confirm this per chapter of “Installation Check”.

### 9.4.3 Driver installation for Windows 98/ME/2000/XP

- After completes the files copy, it will start the driver installation. Then a welcome screen for PL-2303 Driver installer will show up. Click “**N**ext” to continue.



2. When this Installation completes, click **“Finish”** to close the Wizard window.



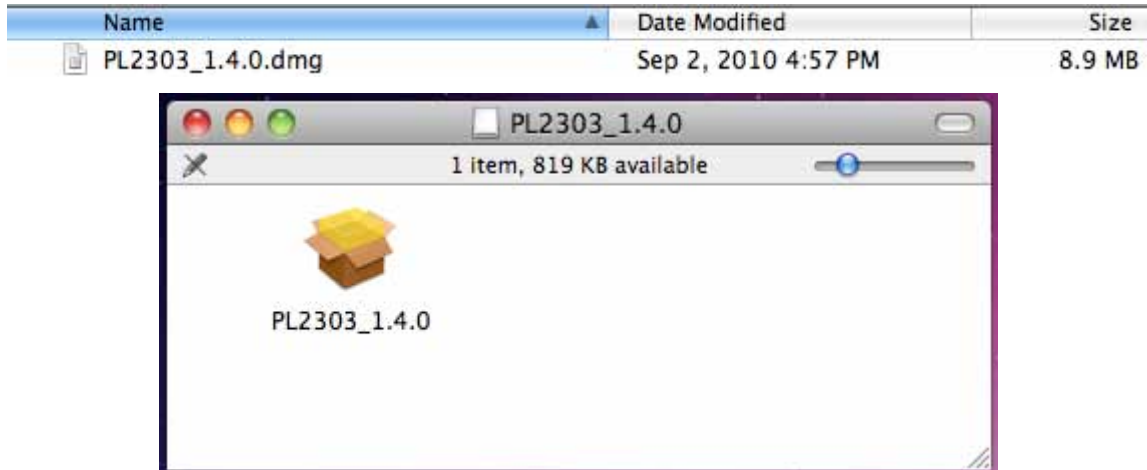
3. Now plug IR adapter to USB port. System will pop up a **“Found New Hardware”** bubble window at the right corner of Tool Bar and display the message: **“Prolific USB-to-Serial Comm Port”** at the first time you plug in.



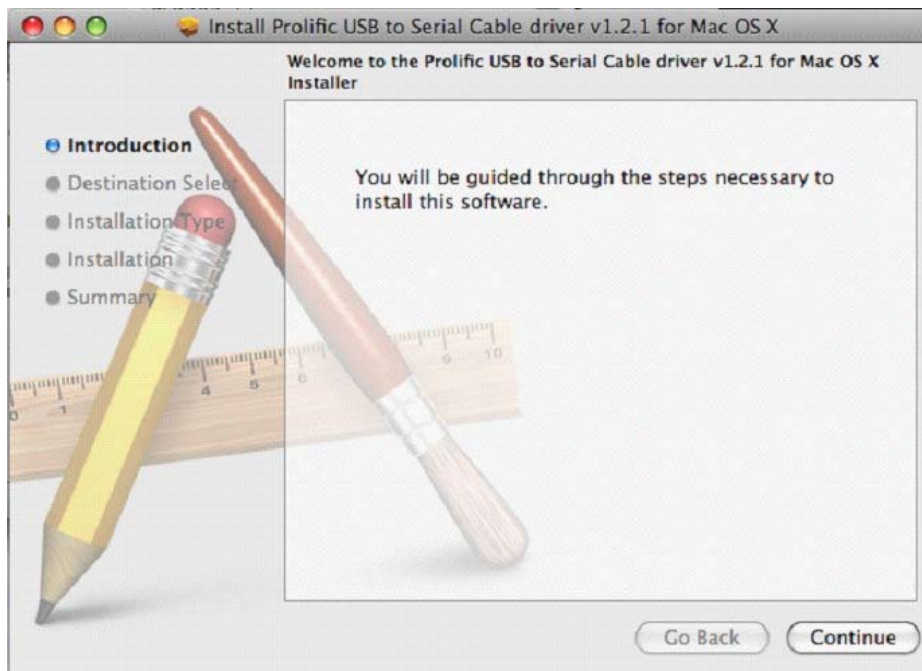
4. This completes the driver installation. Now you can confirm the installation per chapter 11 **“Installation Check”**.

## 10 INSTALLATION UNDER MAC OS

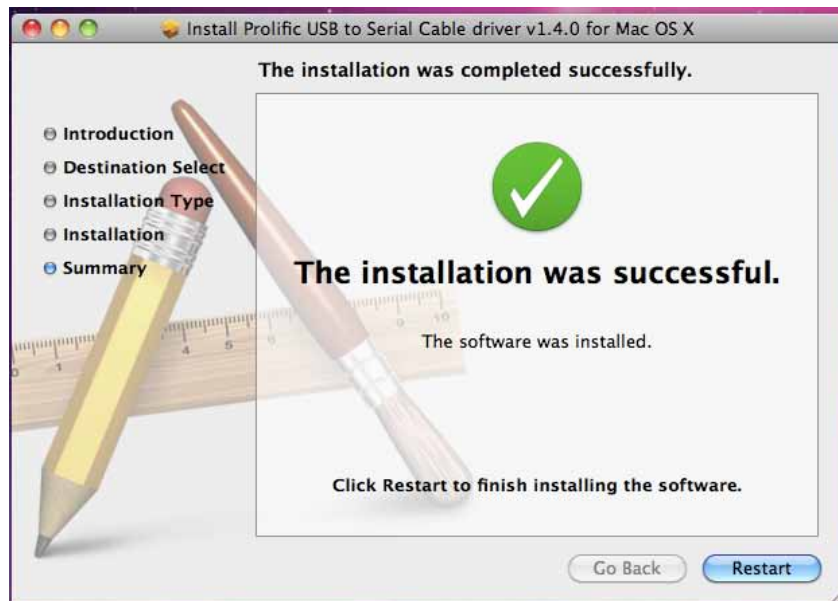
1. Insert the CD into your Mac Machine. The PL-2303 Mac OS X driver package contains the DMG compressed image file. Click on the DMG file to extract the driver installer package.



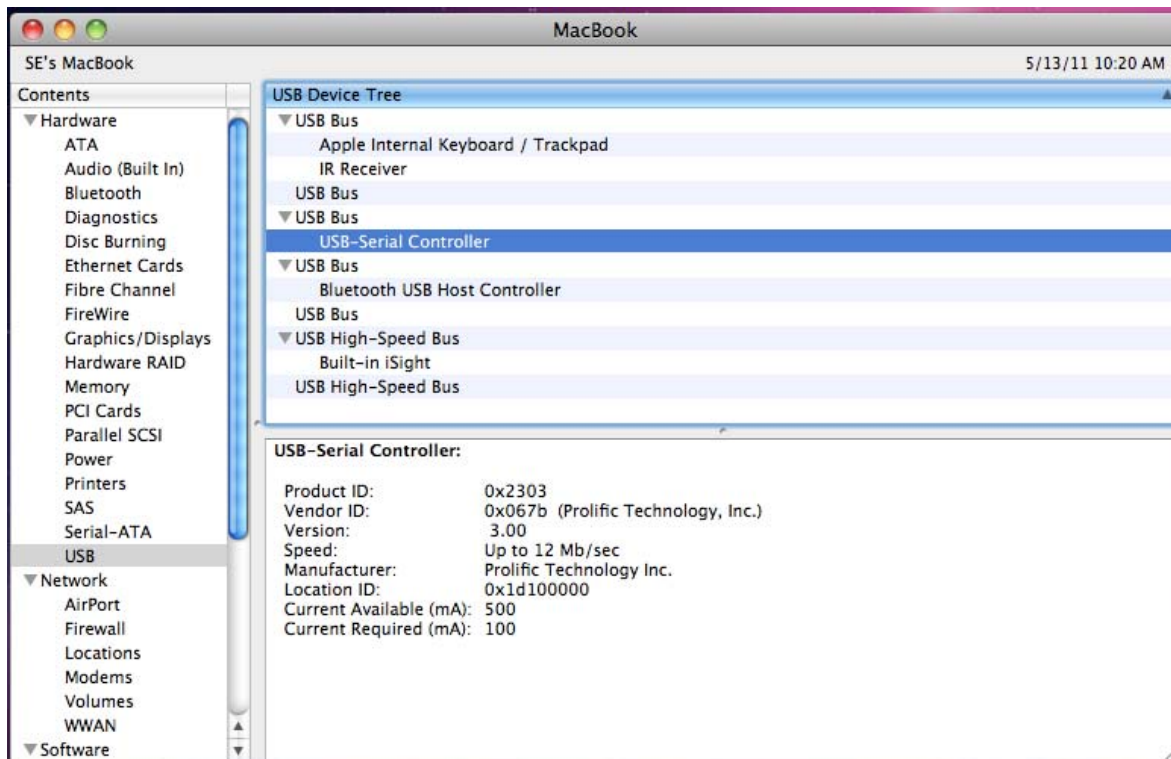
2. Double click the driver installation file “**PL2303.1.4.0**” to start the installation.
3. You will see the **Welcome** Window as below: Click “**Continue**”.



- At the end of the installation, you will need to restart your computer. Close all programs and click **[Restart]** to complete installation and reboot the system.



- After rebooting the system, you can now plug ACT-IRx24UN to the USB port. You can first run the System Profiler program under the Applications-Utilities folder. Click USB hardware inside System Profiler and look for “USB-Serial Controller” or “USB-Serial Controller D”. This means that the hardware device is detected by your Mac computer.

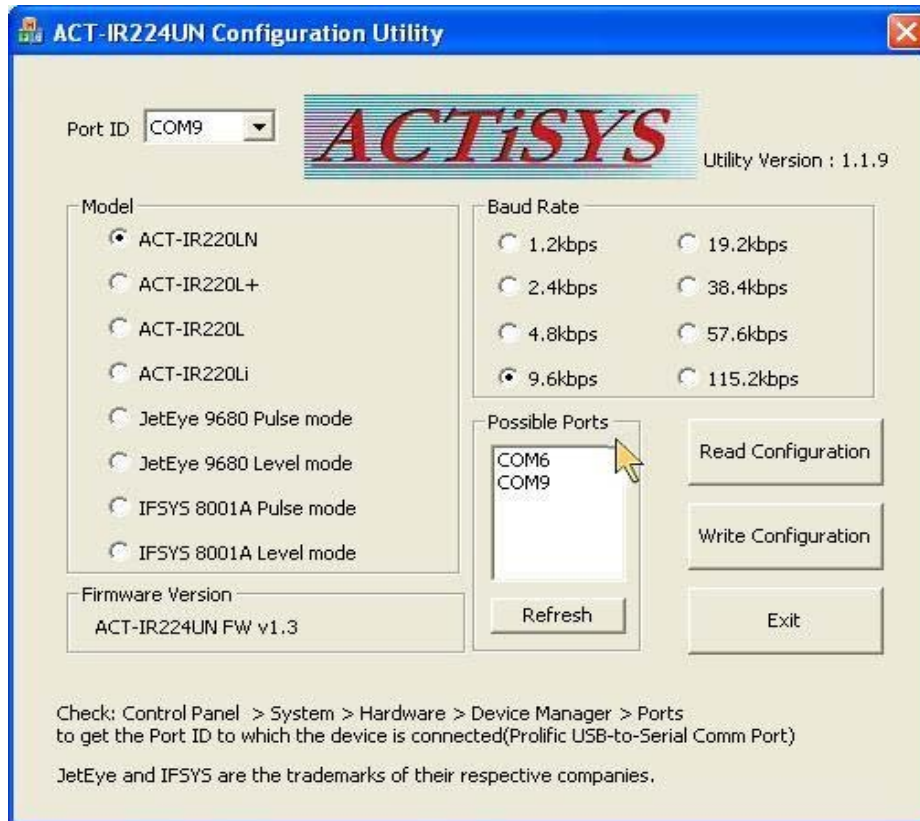




## 11 INSTALLATION CHECK

### 11.1 Using Configuration Utility for Windows To Check

After driver installed, the installation will automatically run “Configuration Utility” as below:

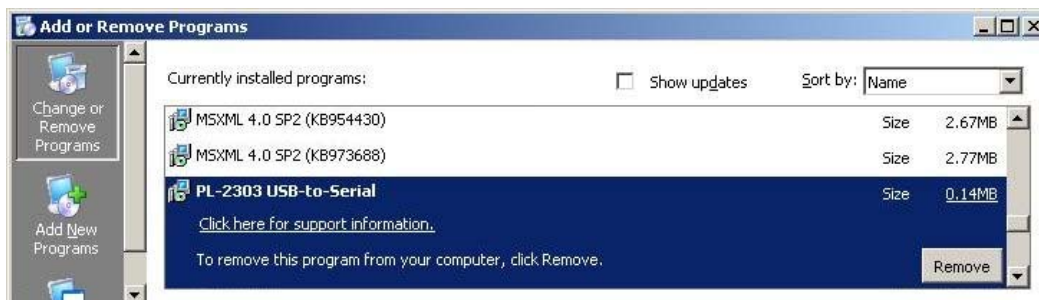


This is a good chance to check which COM port exists if you have plugged any dongle to USB. For this example, COM6 and COM9 showing up means you have plugged two dongles and they have been assigned to virtual COM port 6 & 9 respectively.

### 11.2 Check “Add or Remove Programs” or “Programs and Features” in Windows

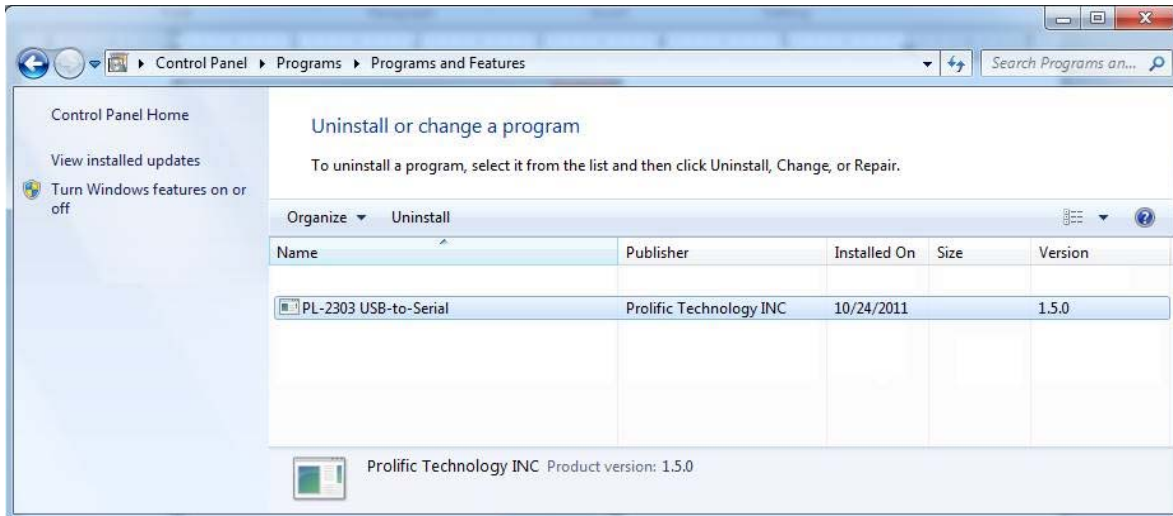
#### 11.2.1 Check Programs in Windows 98/ME/2000/XP

You can open “Add or Remove Programs” window from “Control Panel” in Windows. Check if “PL-2303 USB-to-Serial” is listed as shown below:



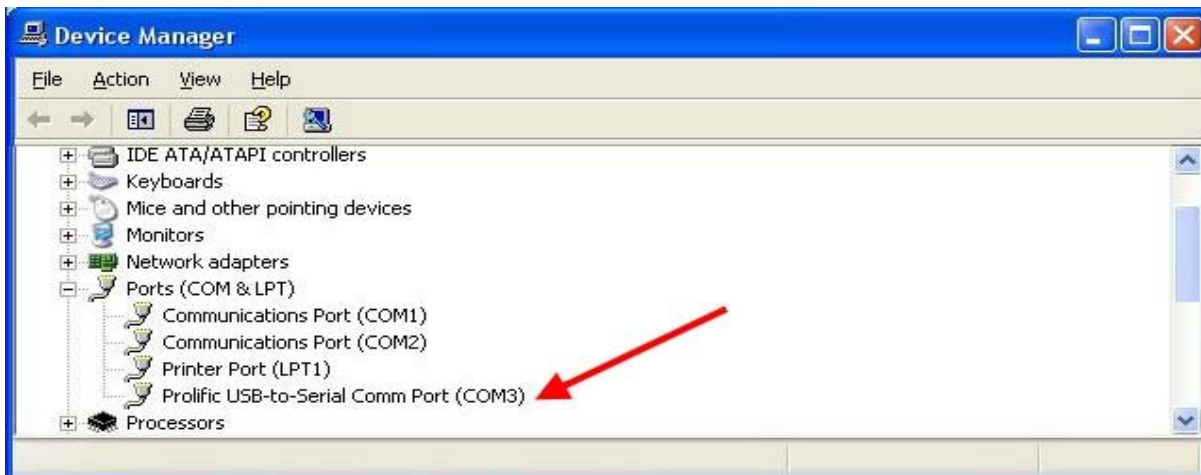
### 11.2.2 Check Programs in Windows Vista / Win 7/8

In Windows Vista /Win 7/8, you can open “**Programs and Features**” window from “**Control Panel**” and see “**PL-2303 USB-to-Serial**” as below.



### 11.3 Device Manager Check in Windows

1. You should have plugged ACT-IRx24UN Dongle to USB Port.
2. To confirm if the installation is successful, you can also open “**Device Manager**”.
3. You will see the device described as “**Prolific USB-to-Serial Comm Port (COMx)**” installed under **Ports (COM & LPT)**, where COMx is the COM port number, **COM3** for this example. This is the place you can check which virtual COM port this device has been connected. See below.



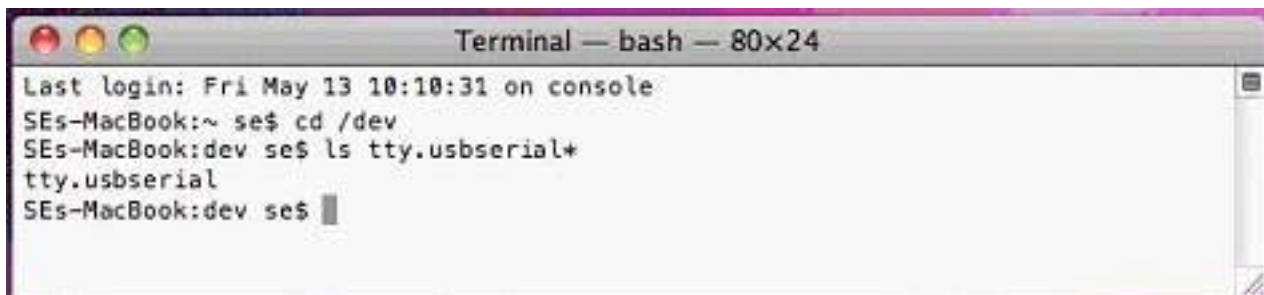
## 11.4 Terminal Check in Mac Machine

1. You can then proceed to check if ACT-IRx24UN is setup properly. You can run the Terminal program under Applications-Utilities folder and type the following commands:

```
cd /dev
```

```
ls tty.usbserial*
```

You should see the “**tty.usbserial**” device which means the USB serial device is already setup properly. If you try to plug another ACT-IRx24UN device, you should also see several “**tty.usbserialx**” listed where “**x**” is the assigned device number similar to Windows COM port assignment.



```
Terminal — bash — 80x24
Last login: Fri May 13 10:10:31 on console
SEs-MacBook:~ se$ cd /dev
SEs-MacBook:dev se$ ls tty.usbserial*
tty.usbserial
SEs-MacBook:dev se$
```

2. **NOTE:** Mac OS may also pop-up a new network interface when it detects a new USB-Serial Controller device. See the chapter of [“Using ACT-IRx24UN UNDER MAC OS X”](#) for more explanation.



## 11.5 Android And Linux Based Equipments

1. **Google Android OS is actually also based on Linux kernel.**
2. After you installed the driver or the OS kernal itself has build-in driver, plug in IR dongle to USB port. You will then get a “**ttusb0**” device.

## 12 UNINSTALL THE DRIVER

**Note:** This uninstallation will only remove the Dongle Driver alone. As to all the other files copied to the folder under C:\Program Files\ACTiSYS\ACT-IRx24UN\, you have to delete them manually when needed.

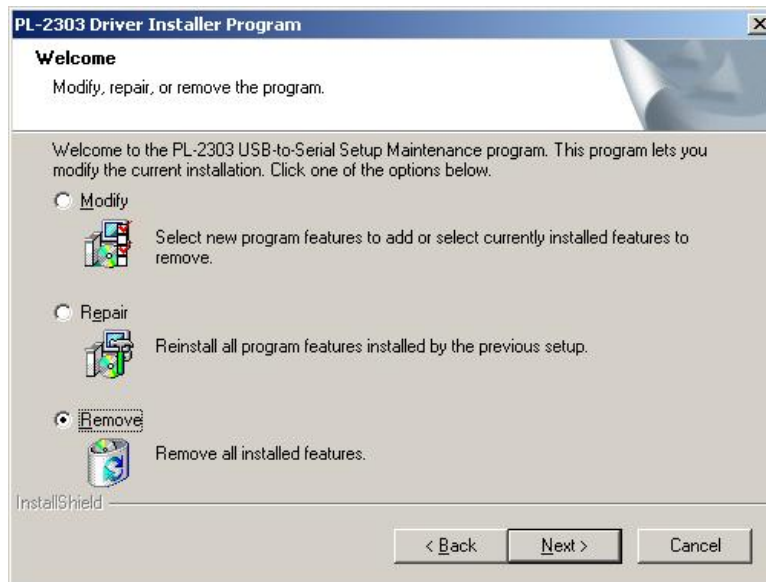
### 12.1 Uninstall The Driver From Windows 98/ME/2000/XP

#### 12.1.1 Method 1 - Add or Remove Programs

1. Double click “**Add or Remove Program**” under “**Control Panel**”.



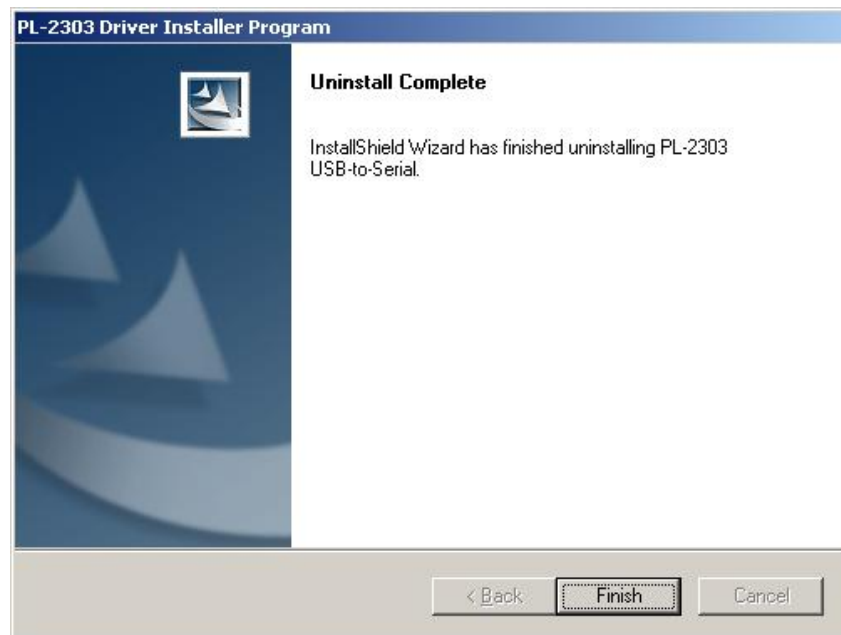
2. Select “**PL-2303 USB-to-Serial**” and click “**Remove**” to remove the drivers. It will pop up a **Welcome** window as below. Select “**Remove**”, then click “**Next>**”.



- It will ask you to confirm as below window. Click **“Yes”** to continue.

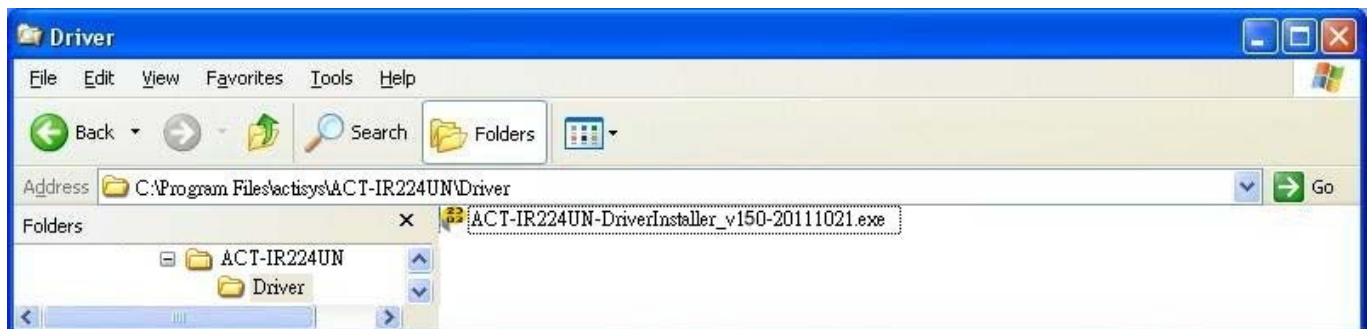


- After seeing **“Uninstall Complete”** window, click **“Finish”** to close the wizard.



### 12.1.2 Method 2 - Driver Installer

- From C:\Program Files\actisys\ACT-IRx24UN\Driver, run **“ACT-IR224UN-DriverInstaller\_v#.#.#-YYYYMMDD.exe”**.



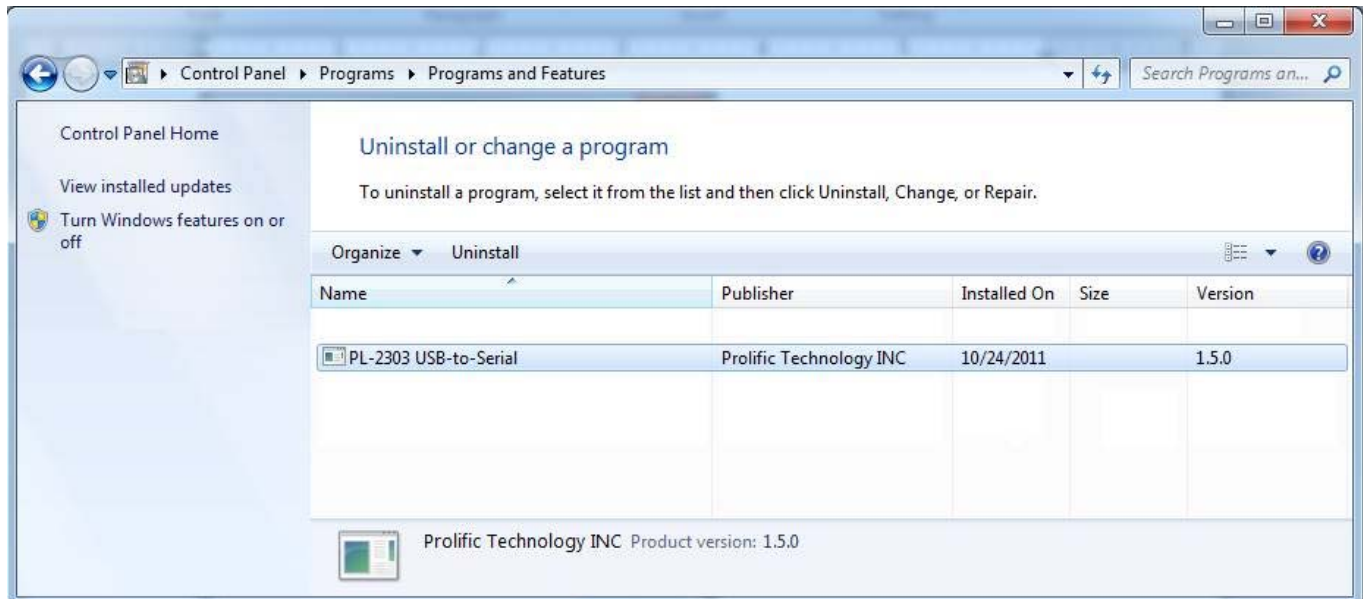
- It will lead you to the same procedure as step 2 to 4 of Method 1.

**Note:** Instead of running above file, if you insert Installation CD the second time, the CD will auto run again and system will then detect the driver installed already and ask you to confirm the same removal procedure.

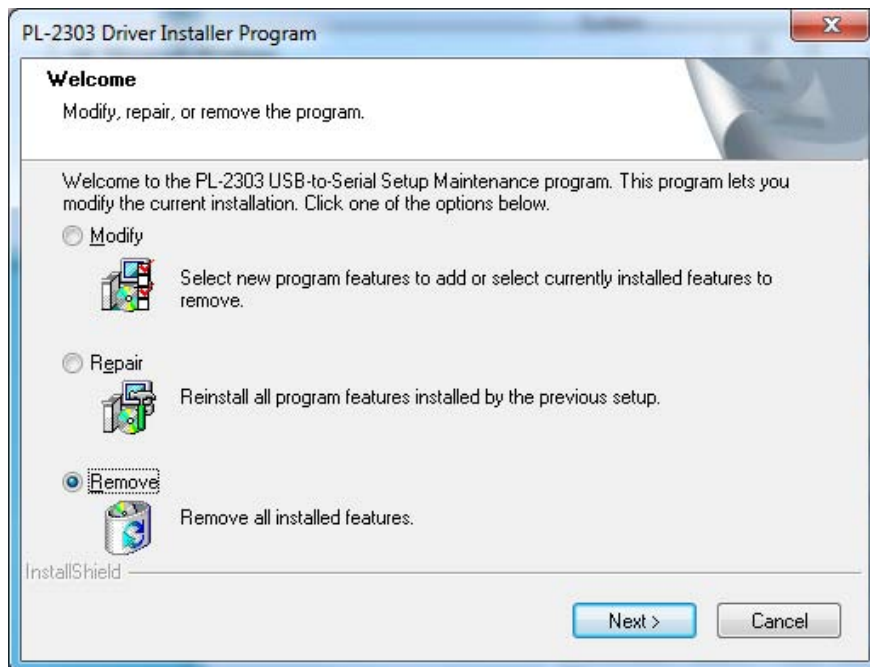
## 12.2 Uninstall The Driver From Windows Vista /Win 7/8 (32 & 64 bits)

### 12.2.1 Method 1 – Programs and Features

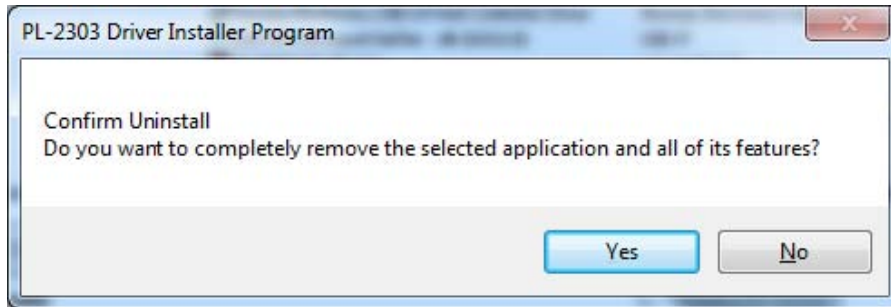
1. Double click “**Programs and Features**” under “**Control Panel**”.



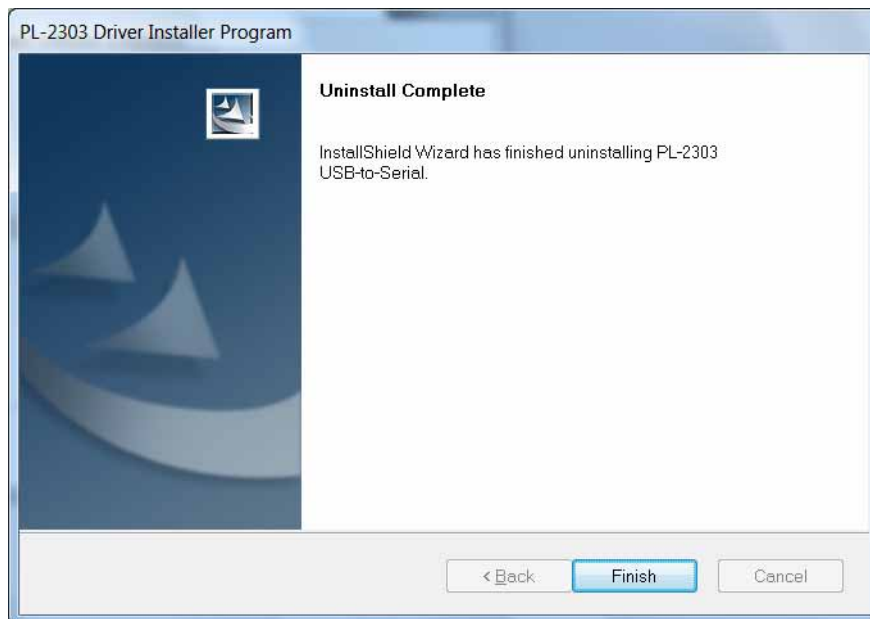
2. Right click on “**PL-2303 USB-to-Serial**” and then click on Uninstall to remove the driver. You may get “elevation prompt” of “(UAC)” if UAC has been turned ON in your Windows Vista/Win 7 OS (see [FAQ](#) for details). Else a **Welcome** window will pop up as follows. Select “**Remove**” and click “**Next>**”.



3. InstallShield Wizard will prompt you to confirm to uninstall. Click **Yes** button to continue.

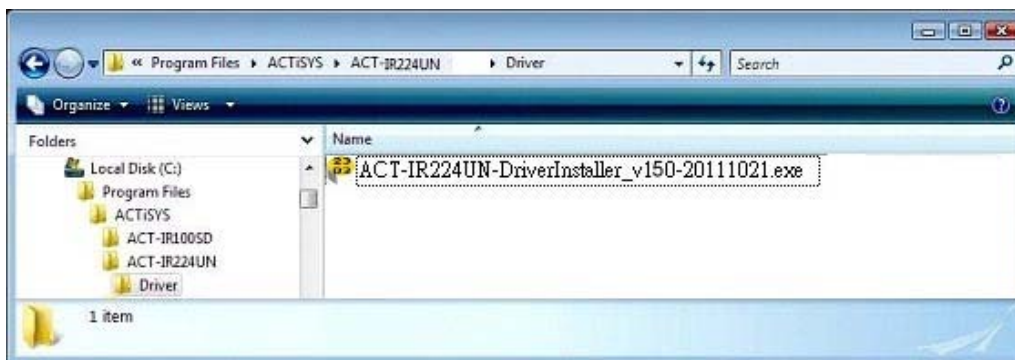


4. Wait for the InstallShield Wizard to complete the uninstall process. When complete. Click **Finish** to end the process as below.



### 12.2.2 Method 2 - Driver Installer

1. From C:\Program Files\ACTiSYS\ACT-IRx24UN\Driver, run  
"ACT-IR224UN-DriverInstaller\_v#.##-YYYYMMDD.exe".



You may get "elevation prompt" of "(UAC)" if UAC has been turned ON in your Windows Vista/Win 7/8 OS (see [FAQ](#) for details). Else it will lead you to the same procedure as Method 1.

2. **Note:** Instead of running above file, if you insert Installation CD the second time, the CD will auto run again and system will then detect the driver already installed and ask you to confirm the same removal procedure.

### 12.3 Uninstall The Driver From Mac OS

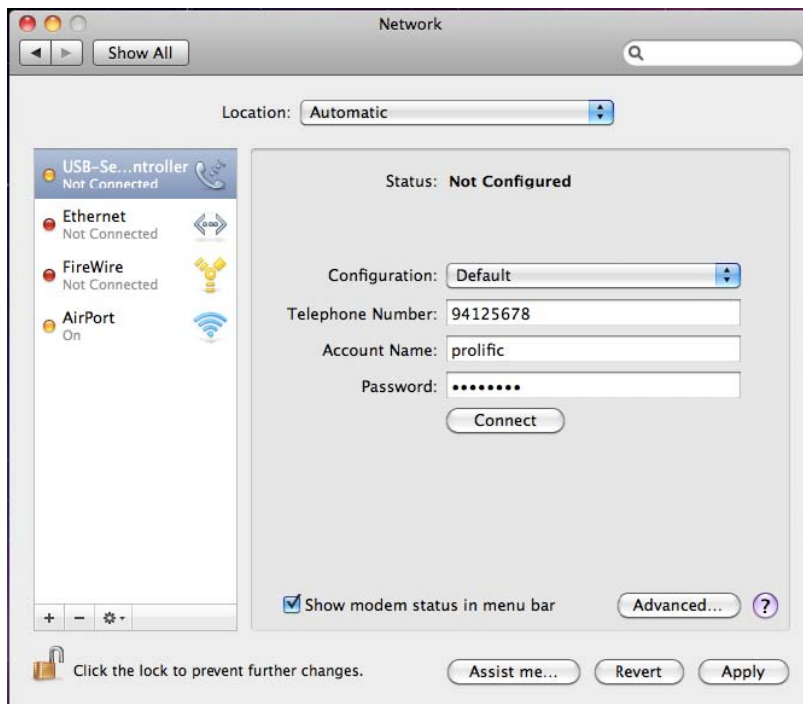
To remove and uninstall ACT-IRx24UN drivers from Mac OS X operating system, you must be logged on as root. You can use the “sudo” command option to substitute user privileges.

1. Run a Terminal session (Applications-Utilities-Terminal) and enter the following commands at the command prompt:

```
cd /System/Library/Extensions  
  
sudo kextunload ProlificUSBSerial.kext (enter system password)  
  
rm -r ProlificUSBSerialDriver.kext
```

You can also go to the System-Library-Extensions file folder to delete the “ProlificUSBSerialDriver.kext” file.

2. To remove the port from the system, go to System Preferences and select Network. Select the “USB-Serial Controller” device shown from the Show menu and click on the “-” remove button to uninstall the port.

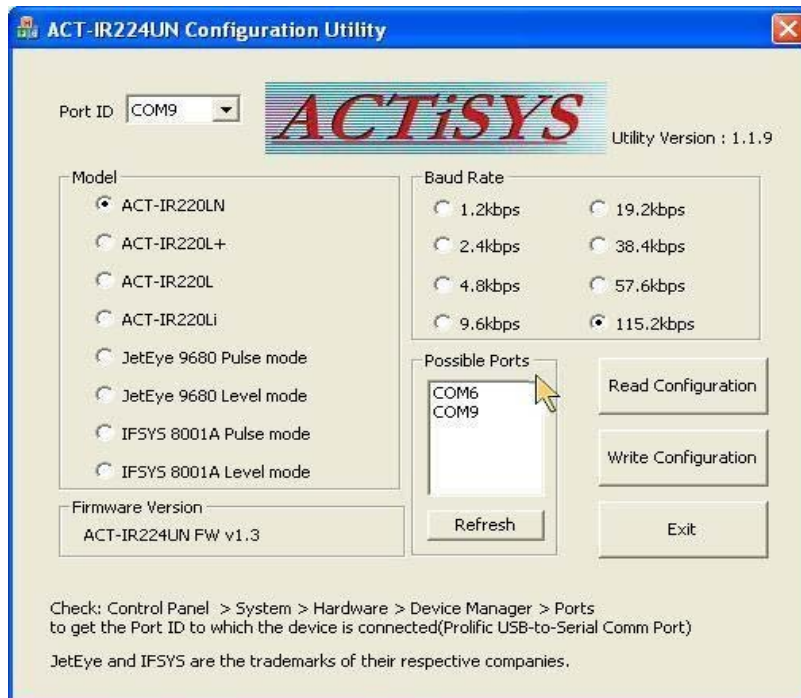


3. Restart the computer again before reinstalling the driver.



## 13 APPLICATION GUIDELINE FOR CONFIGURATION UTILITY

1. Run this utility from C:\Program Files\ACTiSYS\ACT-IRx24UN\ACT-IR224UN-ConfigUtility-vx.x.x-yymmdd.exe



2. Select “**Port ID**” where ACT-IRx24UN dongle is connected.

**Note: 1.** ACT-IRx24UN Configuration Utility program will display the “Port ID” where they are connected (i.e., “**Possible Ports**” as displayed at yellow arrow in above screen).

2. To get the Port ID, please also refer to section [11.3 Device Manager Check](#).

### 13.1 Refresh

This will refresh the “Possible Ports” list and also check for ACT-IRx24UN device from that list. If device found, it will read the configuration detail and display in the screen,

### 13.2 Read Configuration

This will read the Current Configuration from ACT-IRx24UN device.

### 13.3 Factory Default Setting

The factory default is **ACT-IR220LN, 115.2 kbps.**

### 13.4 Write Configuration

After change, please click “Write Configuration” to write the new settings to -the device.

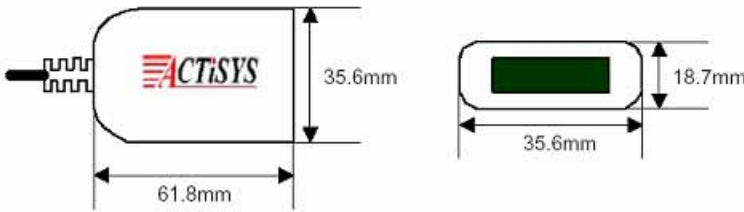

## 14 USING ACT-IRx24UN UNDER WINDOWS

Establish IR Connection with another PC after confirming the detection of IR dongle as indicated above. Place any other Raw IR device (e.g., ACT-IR220L+). Launch your Communications application like “HyperTerminal” or any other application in the Windows.

## 15 LED BEHAVIOR

Status	Behavior
Power on	LED on for one second
Standby and receiving	LED off.
Transmitting	Blinks rapidly but weak
Configuring by the utility	LED on for one second for read and write operations.

## 16 IR DONGLE DIMENSIONS

ACT-IR224UN		<b>USB Cable Length: 120 cm</b>
ACT-IR424UN		

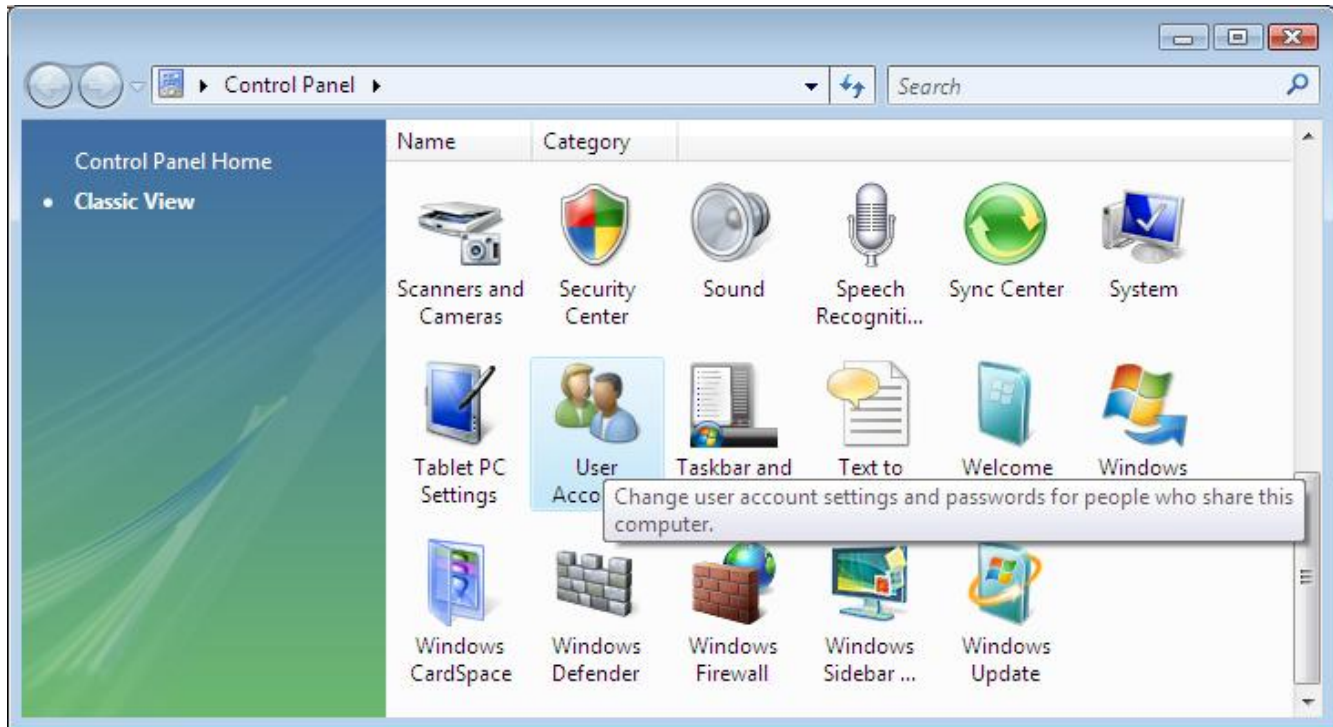
## 17 CHARACTERISTICS AND SPECIFICATION

Parameter	Min.	Typical	Max.	Units
DC supply voltage		5.0	5.2	V
Supply voltage, VSS		0		V
Operating temperature range, TA	0		60	°C
DC current (Ready mode)		15	20	mA
DC current (Active mode)		60	100	mA
Infrared transmitting range	1	158	200	cm
USB signal threshold level	+4.8	+5V	+5.5	V

## 18 APPENDIX : TURN UAC On/Off in WINDOWS VISTA /WIN 7/8

### 18.1 Check current UAC (User Account Control) Status

1. Go to Control Panel => **Security Center**

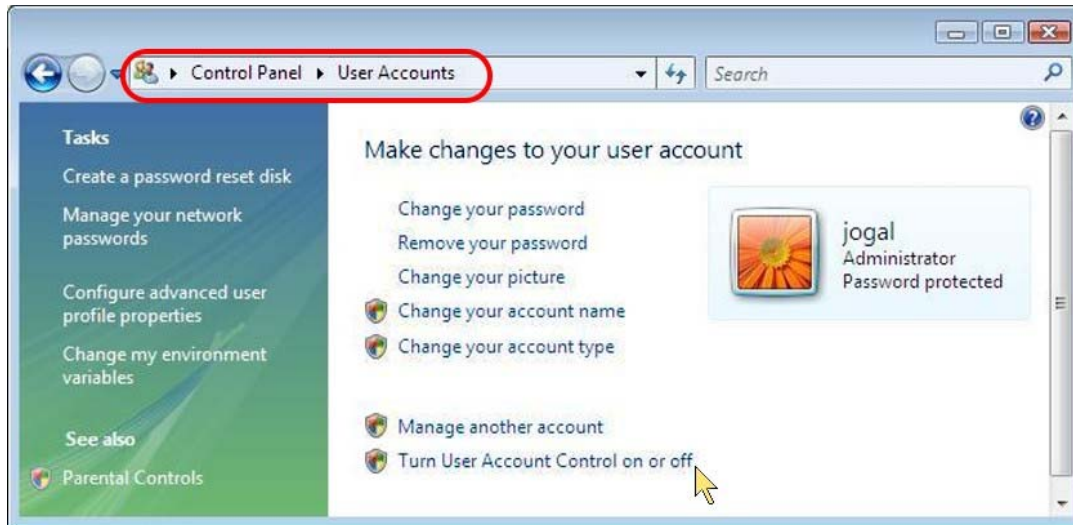


2. You can see current status of UAC (**On** or **Off**) like below:

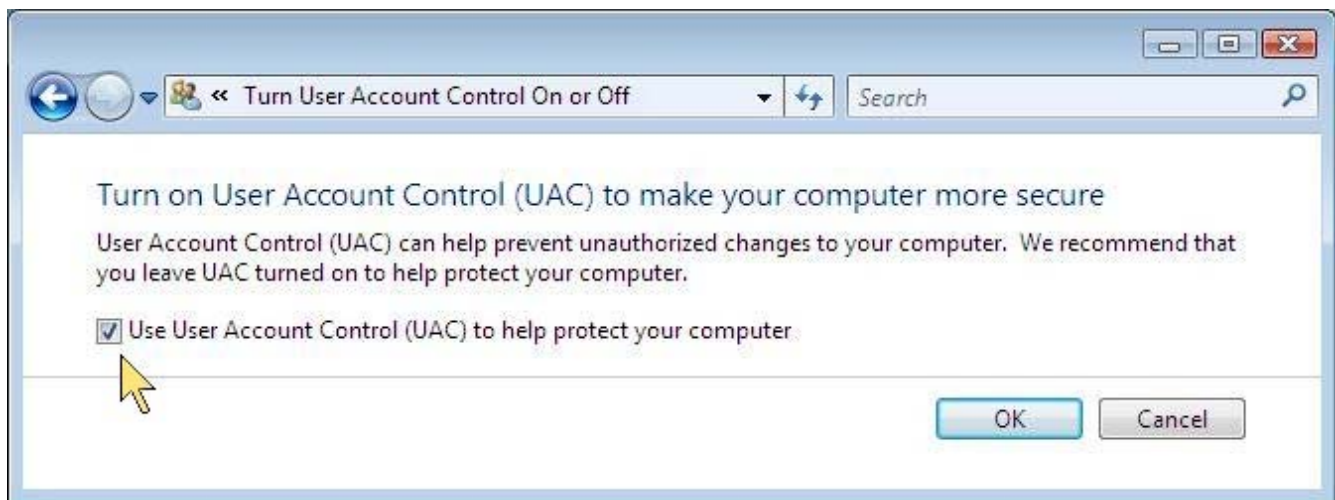


## 18.2 Turn On / Off UAC

1. Go to Control Panel => User Accounts, you can see below window. Click “Turn User Account Control on or off” button.



2. You can **turn either on (checked) or off (unchecked) UAC** by clicking the following check box as below.



## 19 WARRANTY INFORMATION

ACTiSYS Corporation warrants the first end-user purchaser, for a period of 1 year from the date of purchase, that this wireless interface (The Product) will be free from defective workmanship and materials, and agrees that it will, at its option, either repair the defect or replace the defective Product or part thereof at no charge to the purchaser for parts or for labor.

This warranty does not apply to any appearance items of the Product, any consumable items such as paper, ink ribbon, or batteries supplied with the Product, or to any equipment or any hardware, software, firmware, or peripheral other than the Product. This warranty does not apply to any Product the exterior of which has been damaged or defected, which has been subjected to misuse, abnormal service or handling, or which has been altered or modified in design, construction or interfacing. Tampering with Label Voids Warranty.

In order to enforce the rights under this limited warranty, the purchaser should mail, ship or carry the Product, together with proof of purchase, to ACTiSYS.

The limited warranty described above is in addition to whatever implied warranties may be granted to purchasers by law. To the extent permitted by applicable law, ALL IMPLIED WARRANTIES INCLUDE THE WARRANTIES OF MERCHANT ABILITY AND FITNESS FOR USER ARE LIMITED TO A PERIOD OF 1 YEAR FROM THE DATE OF PURCHASE. Some states do not allow limitations on how long an implied warranty lasts, so the above limitation may not apply to you.

Neither the sales personnel of the seller nor any other person is authorized to make any warranties other than those described above, nor to extend the duration of any warranties beyond the time period described above on behalf of ACTiSYS. Corporation.

The warranties described above shall be the sole and exclusive remedy available to the purchaser. Correction of defects, in the manner and for the period of time described above, shall constitute full satisfaction of all claims, whether based on contract, negligence, strict liability or otherwise. In no event shall ACTiSYS Corporation be liable or in any way responsible, for any damages or defects in the Product which were caused by repair or attempted repairs performed by anyone other than ACTiSYS technician. Nor shall ACTiSYS Corporation be liable or in any way responsible for any incidental or consequential economic or property damage. Some states do not allow the exclusion of incidental or consequential damages, so the above exclusion may not apply to you.



20 CONTACT INFORMATION

**GO WIRELESS WITH ACTiSYS IR**

**ACTiSYS**  
*The Wireless Infra-red Expert*

- ◆ IrDA Protocol Software For Portable Devices
- ◆ IrDA Test Software For Hardware Systems
- ◆ IrDA Printer And Computer Adapters

115.2K, 4M and 16M bps

IR100M/1000M

IR2000L

IR220L/L+

The advertisement features a central red background with the ACTiSYS logo and tagline. Below the logo is a list of three bullet points. To the right of the list, the text '115.2K, 4M and 16M bps' is displayed. Below this text are three images of IrDA hardware: a blue IrDA adapter for a laptop labeled 'IR100M/1000M', a black IrDA adapter labeled 'IR2000L', and another black IrDA adapter labeled 'IR220L/L+'. Surrounding these central images are various electronic devices connected by red lines, including a printer, a PDA, a mobile phone, a digital camera, a laptop, and a desktop monitor.

**ACTiSYS Corporation**  
**921 Corporate Way**  
**Fremont, CA 94539, USA**  
**TEL:+1-510-490-8024, FAX:+1-510-623-7268**  
**E-Mail: [irda-info@actisys.com](mailto:irda-info@actisys.com)**  
**Web: <http://www.actisys.com>**